

FROM  
SCARCITY



TO  
ABUNDANCE



**Scarcity and Abundance: Emeryville** is a publication produced by the Master of Urban Design Program of the University of California, Berkeley. The book is the result of the advanced studio Scarcity and Abundance, created by Amit Price Patel, Mona Lovgreen and Pol Fité Matamoros in the Fall of 2023.

All rights reserved:

© Texts Devyani Jain and Nupur Khanter

© Images Bageshri Thakar, Boge Lyu, Buck Lee, Clarisa Quintanilla, Devyani Jain, Maxi, Nupur Khanter, Raghuvveer Kathpalia, Tianqi Shi, Xiang Xiong, Xueyi Zhao, Ziqi Tao

© Cover Photo Google Earth

© Cover Render Devyani Jain

Licensed under Creative Commons Attribution-NonCommercial-ShareAlike 4.0 International

The projects are the result of the Fall 2023 Master of Urban Design Advanced Studio Scarcity and Abundance.  
To learn more:

Website: <https://ced.berkeley.edu/iurd/urban-design>

Instagram: @Berkeley MUD

Book Editing and Design by Devyani Jain and Nupur Khanter

Typeset: Helvetica

ISBN 9781304245861



# contents

## discovery 4

background  
licking the neighborhood

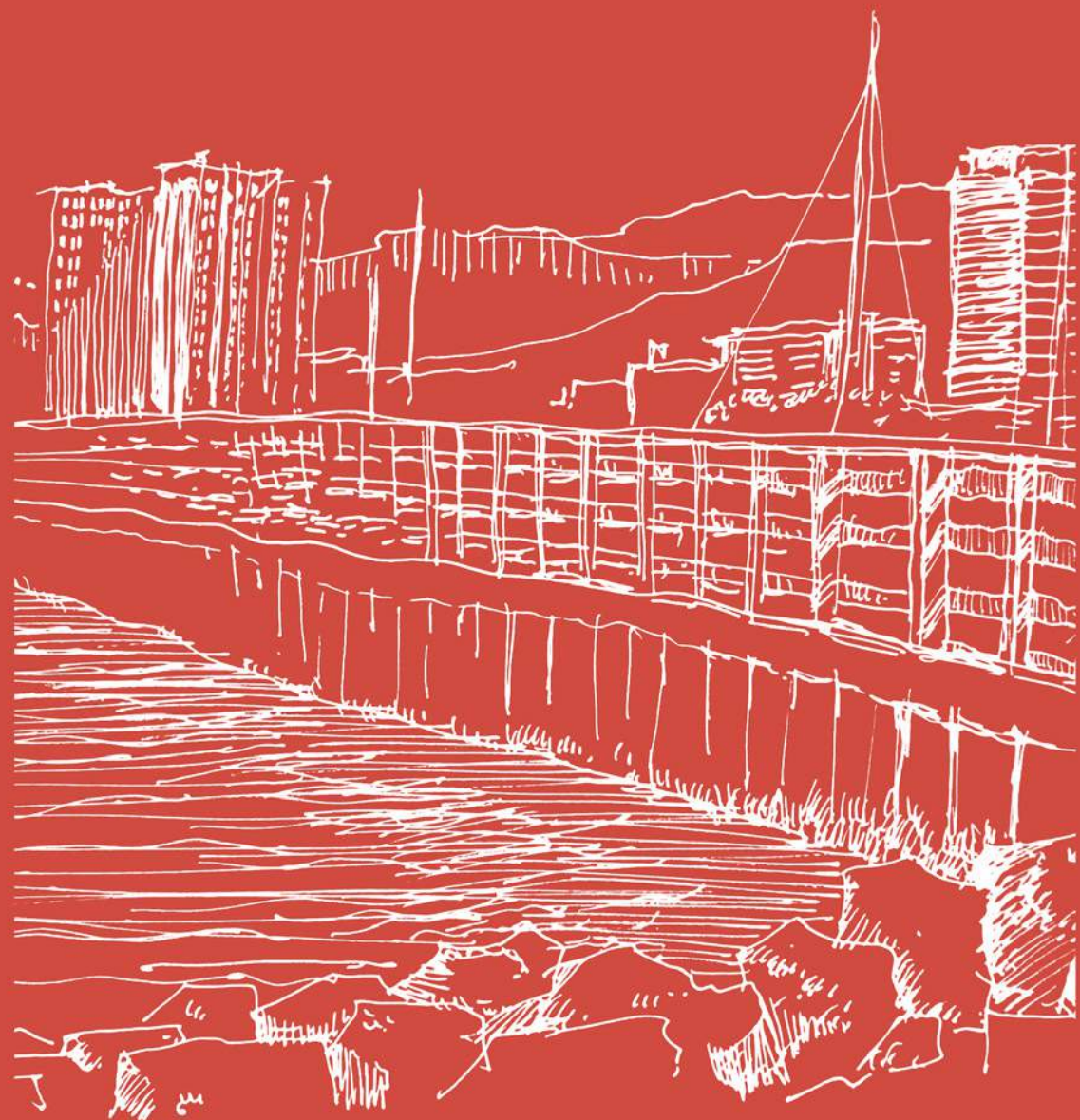
## exploration 6

constructing the site  
design responses

## engagement 9

final review  
public presentation





**background**





# brief

The concept of scarcity and abundance holds significant relevance in the realm of urban planning and design, particularly in the context of California. This urban design studio focuses on Emeryville, California, a small yet strategically positioned city between Oakland and Berkeley within the San Francisco Bay Area. Emeryville's history as an industrial hub has transformed over the years, witnessing a shift towards a more diverse and vibrant urban environment. Today, the city stands as a successful example of urban revitalization and adaptive reuse, making it a compelling site for exploring innovative solutions.

However, with its relatively small geographic area of approximately 2 square miles, Emeryville faces the scarcity of available land for new development and location in an area vulnerable to earthquake liquefaction and sea level rise. This scarcity intensifies the demand for creative and efficient land use strategies, emphasizing the importance of thoughtful and sustainable urban design. The studio engaged students in research to understand Emeryville's urban fabric, historical evolution, demographic changes, and current urban challenges.

This was followed by design experimentation of proposing innovative imaginations and housing solutions that are sensitive to the scarcity of land and the need for sustainable, resilient urban environments. Interdisciplinary collaboration was promoted by working across various domains to integrate sustainability, social equity, and economic vitality in design proposals, aided by the expert series held throughout the semester.

level rise. This scarcity intensifies the demand for creative and efficient land use strategies, emphasizing the importance of thoughtful and sustainable urban design.

The studio engaged students in research to understand Emeryville's urban fabric, historical evolution, demographic changes, and current urban challenges. This was followed by design experimentation of proposing innovative imaginations and housing solutions that are sensitive to the scarcity of land and the need for sustainable, resilient urban environments. Interdisciplinary collaboration was promoted by working across various domains to integrate sustainability, social equity, and economic vitality in design proposals, aided by the expert series held throughout the semester.



An aerial satellite image of a coastal region. The left side shows a large body of water with a dark, rocky coastline. The right side shows a city with a grid street pattern and surrounding agricultural fields. In the center, there are rugged, brown mountains. A vertical line runs down the middle of the image. The text '+ EMERYVILLE' is overlaid in the center.

**+ EMERYVILLE**





**licking the  
neighborhood**



# field work

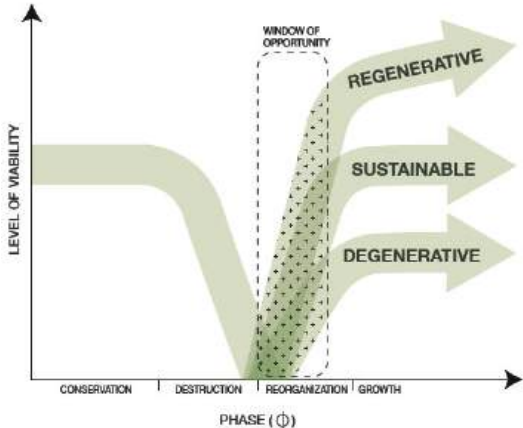
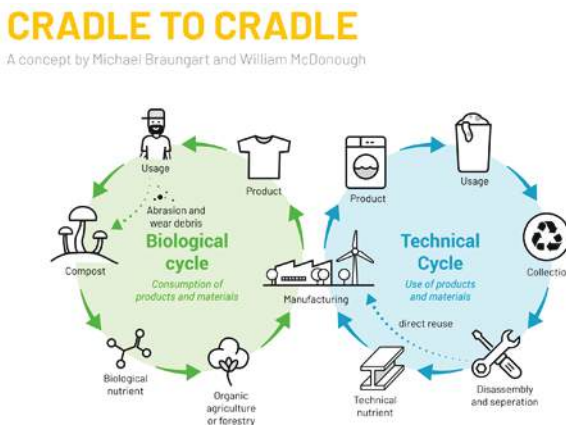
The essence of our fieldwork, involved students immersing themselves in the urban landscape of Emeryville. The exploration began with an enlightening presentation by Miroo Desai (City Planning Manager) and Chadrick Smalley (Community Development Department) who outlined the historical contours of Emeryville. This set the stage for a series of interactive site visits where students engaged with city officials, delving into Emeryville's developmental objectives and challenges. As part of their projects, students conducted in-depth interviews with a diverse array of local stakeholders—ranging from residents and artists to seniors, business owners, and representatives of indigenous communities.





# expert series

The series featured a cadre of expert speakers, each specializing in different facets of urban development, such as sustainability, real estate, storytelling, and urban well-being. This initiative provided students with a rich tapestry of perspectives, equipping them with the comprehensive understanding necessary to craft well-rounded design proposals.



### Transportation Planning



**Ryan Russo**  
Principal, Together Projects

### Sustainability & Resiliency



**Mara Baum**  
Partner, DIALOG

### Community Wellbeing



**Antonio Gómez-Palacio**  
Partner, Chair, DIALOG

### Real Estate Development

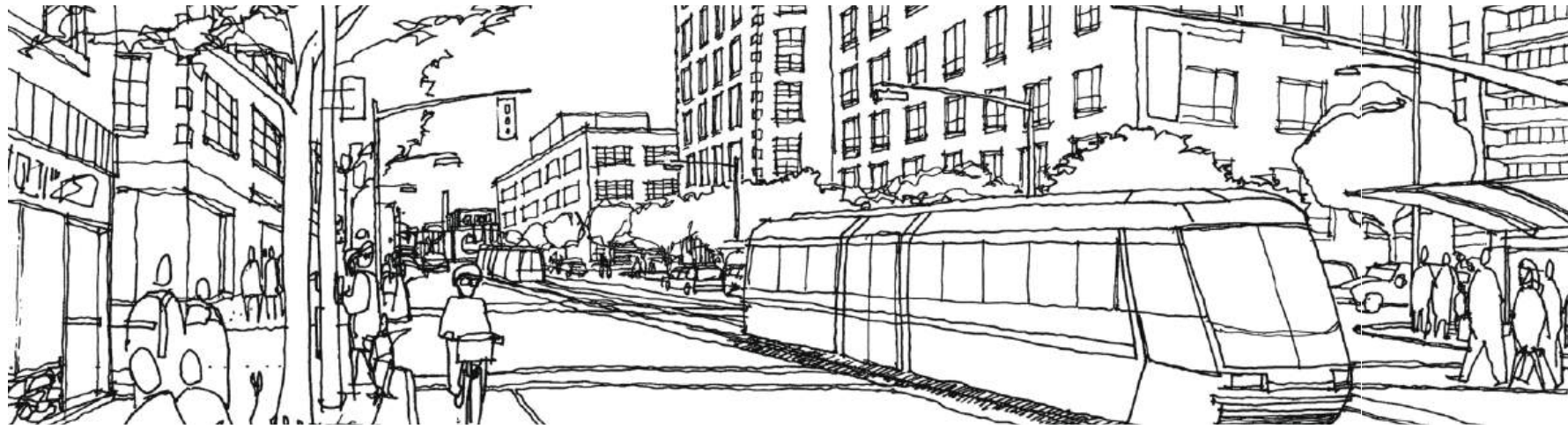


**Mike Kramer**  
Managing Director, Sand Hill Property



Speaker: Mara Baum Partner, DIALOG





Through these engagements, students not only gained insights into the technical and narrative dimensions of urban planning but also understood the human and ecological impacts of their designs, ensuring their proposals were both innovative and inclusive.

# expert series



## Planning Game



**Karen Alschuler**  
*Principal, Perkins & Will*

## Public Policy



**Robert Ogilvie**  
*Partner, DIALOG*

## Emeryville Planning and Redevelopment



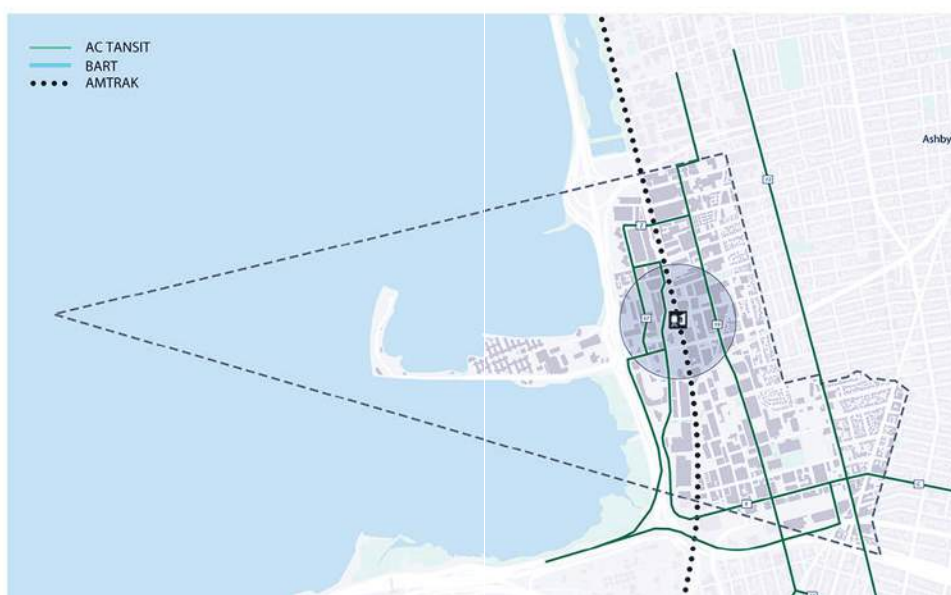
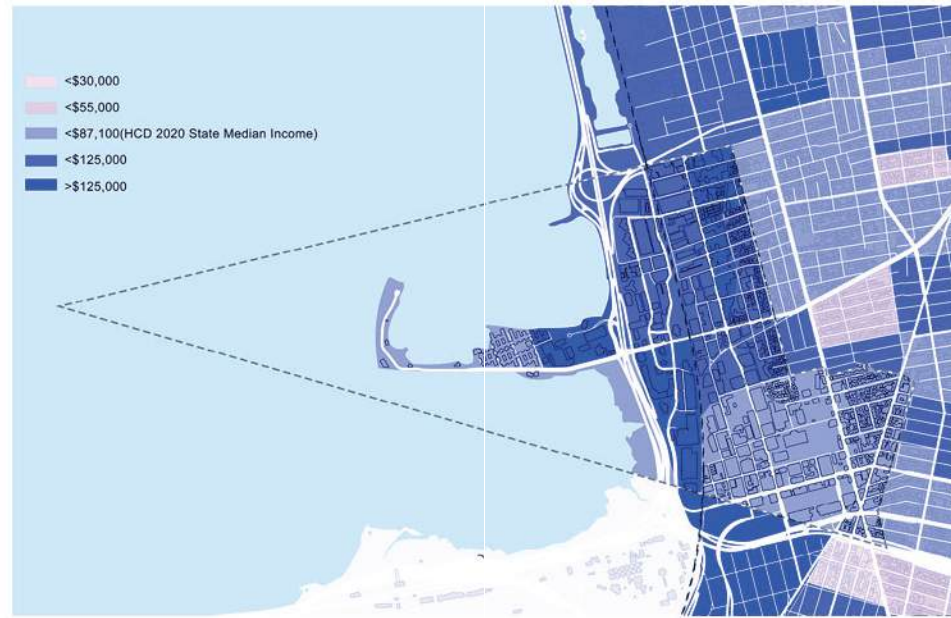
**Luke Leuschner**  
*Student, UC Berkeley*

## Storytelling



**Guneet Anand**  
*Associate Principal, SITELAB*



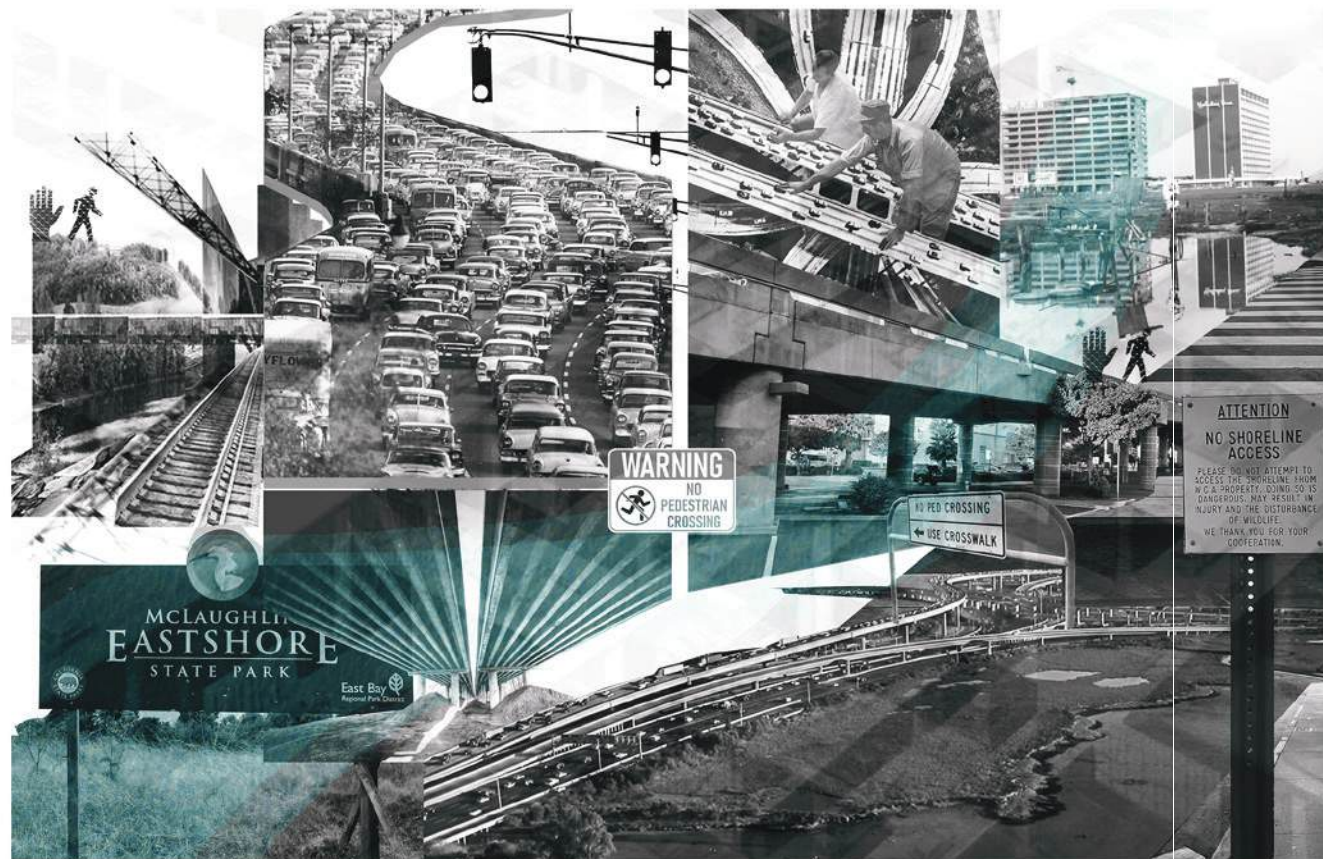
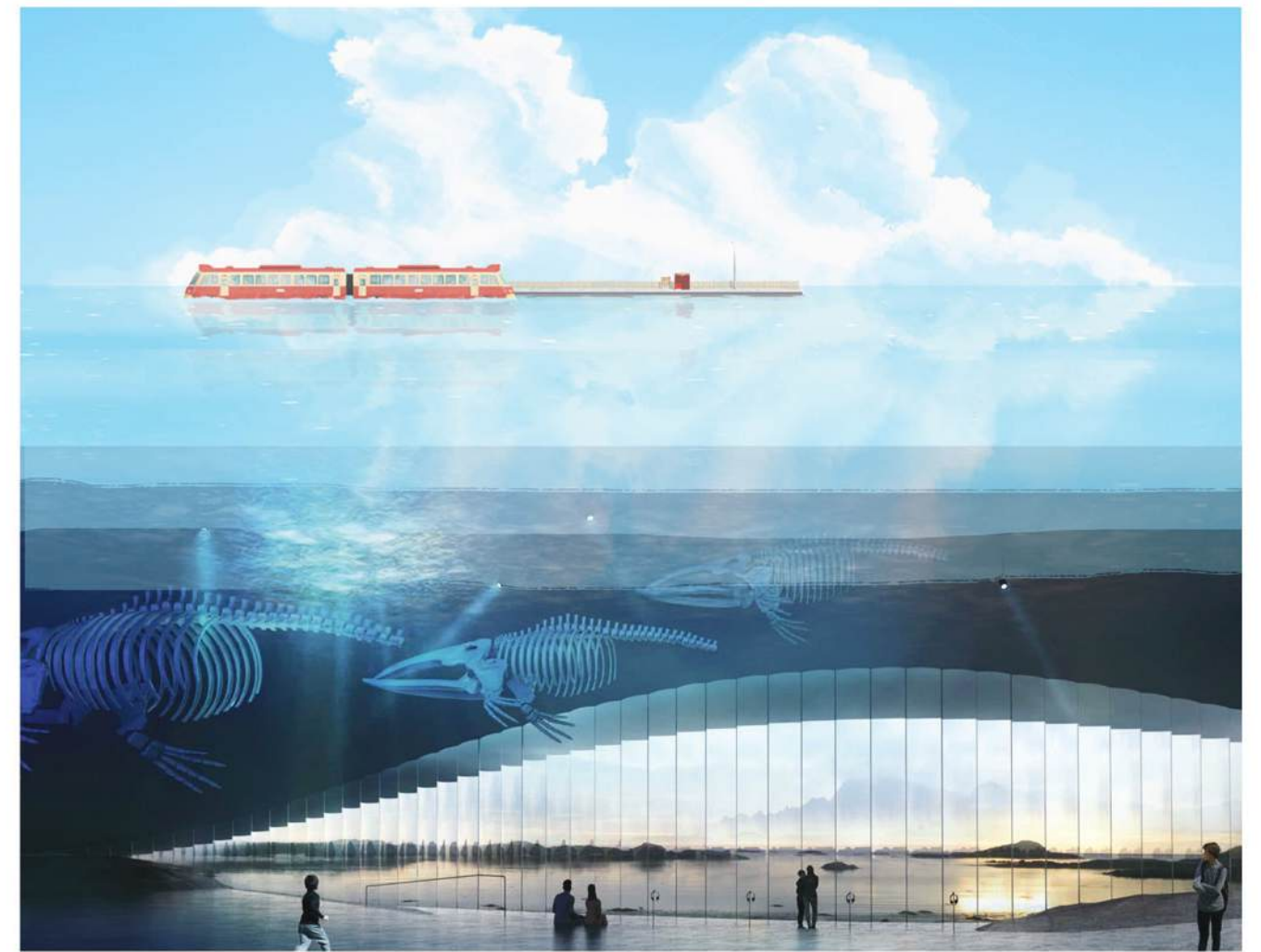
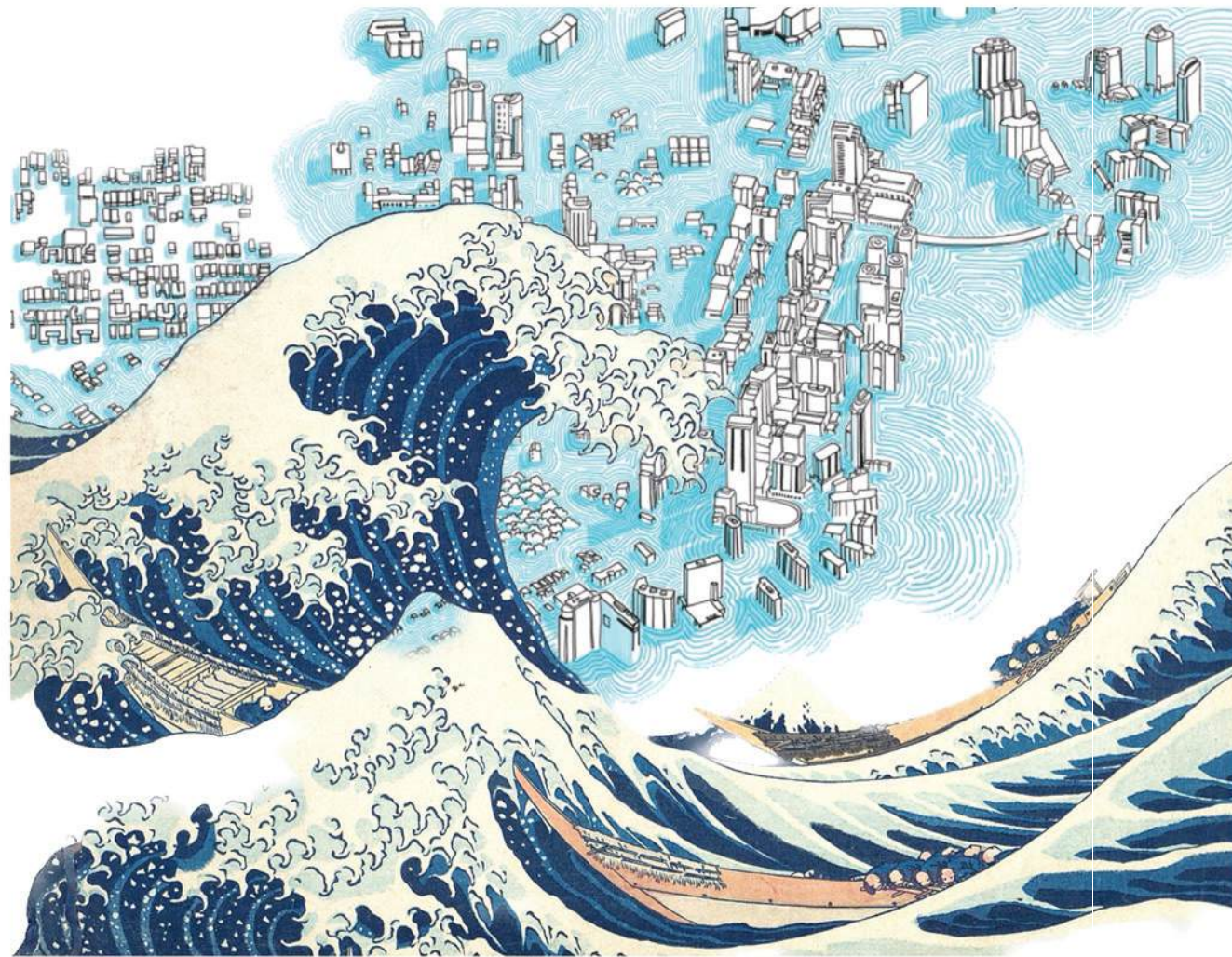






**constructing  
the site**







labor,  
employment,  
ephemerality







memories  
of the past



# spaces of care for the elderly





making the city

Scale: 1:1000







**design  
responses**



# Reimagining Emeryville's Coastline

Devyani Jain



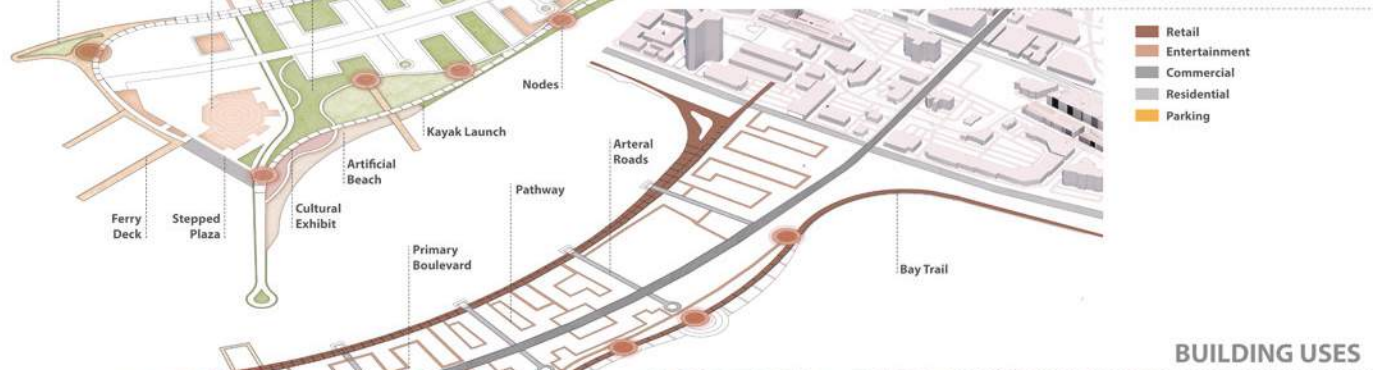
Emeryville encompasses a total area of 2.0 sq.m, with approximately 40% (almost 0.8 sq.m) consisting of water. Despite its expansive 4-mile-long coastline, it is hardly accessible due to freeway infrastructure, forming both a physical and visual barrier along the waterfront. Looking ahead to the year 2100, Emeryville's coastline faces the threat of coastal inundation resulting from climate change. This poses a unique challenge, but also offers an opportunity to radically reinvision Emeryville's coastline using resilient design solutions.



**OPEN SPACES AND PLAZAS**



**MOVEMENT NETWORK**



**BUILDING USES**



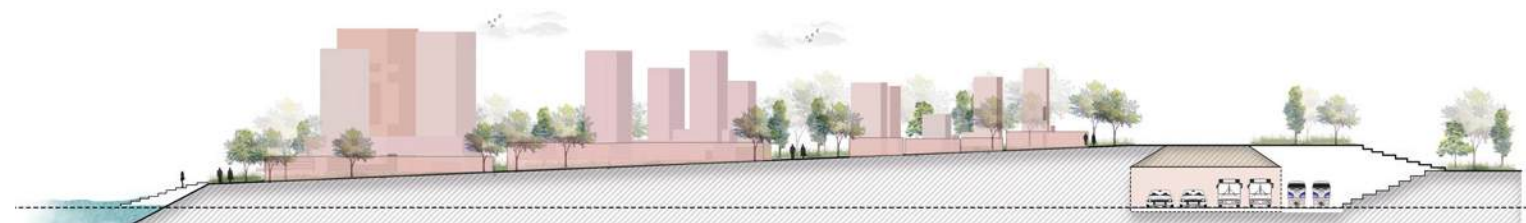
**OVERALL MARINA**



**Existing Underutilized Marina**



EMERYVILLE BOARDWALK   HONG KONG RESTAURANT   EMERYVILLE MARINA   TRADER VICS   WATERGATE APARTMENTS   BIOTECH TOWERS   EMERYVILLE CRESCENT   INTERSTATE 80



**HARBOUR PLAZA**



**STEPPED FERRY TERMINAL PLAZA**



**OYSTER TRAIL**

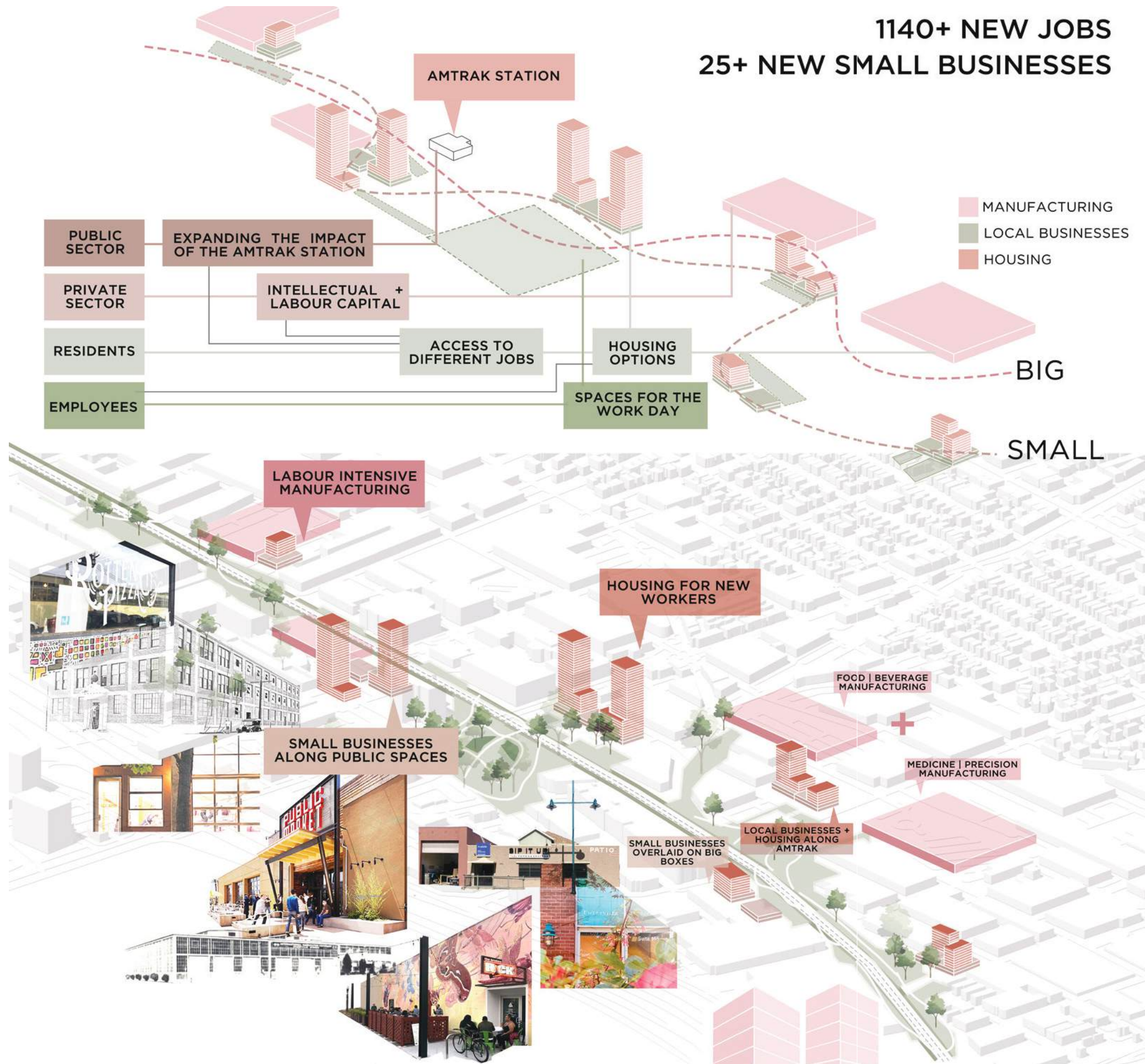


**BREAKWATER WALK**





1140+ NEW JOBS  
25+ NEW SMALL BUSINESSES



# Big + Small

Nupur Khanter

Emeryville, dubbed ‘the little city that could’ represents a unique zeal for transformation and entrepreneurship. This lends itself to being a substantial employer, however this allocation and distribution of jobs is not equitable. This project advocates for a diversification of jobs in Emeryville by capitalizing on the Amtrak Corridor and proposing manufacturing and small business uses. By a combination of the big and the small in the form of labor intensive manufacturing and local entrepreneurial ventures, different types of jobs are created along a new public space. The project proposes innovative match-ups of economic activity as being key to greater employment equity.



LOCAL LABOUR FORCE  
22793

"A FEELING OF WALKING ON THE STREETS  
WITH HUGE INDUSTRIAL BUILDINGS"

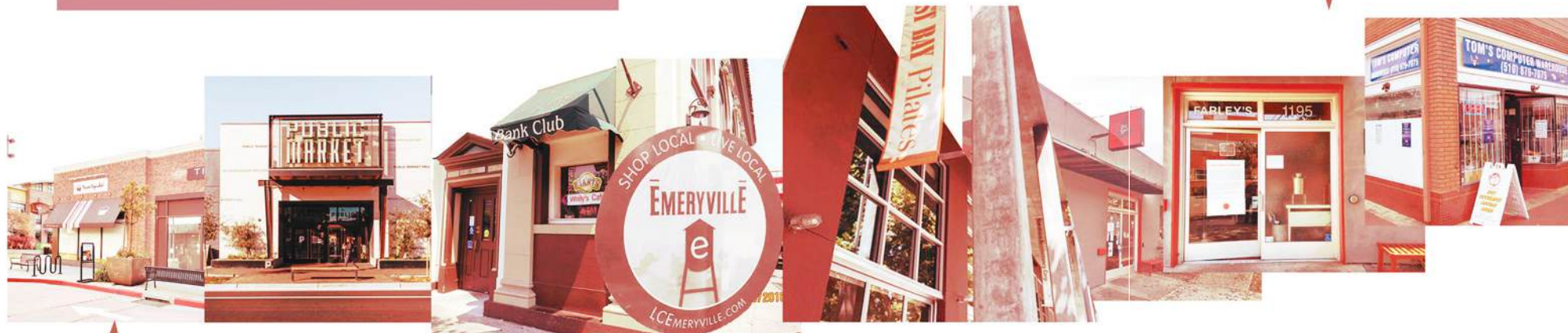


Stepping out for a beer after a day's work 🍺💰



"IT HAS THESE BUILDINGS AND WHEN YOU ENTER  
THE STREET, YOU KNOW IT FEELS DIFFERENT"

"FOR ME, IT'S AN OPPORTUNITY TO SHARE SOME OF THE  
HISTORY THAT I'VE EXPERIENCED OVER MY LIFETIME"



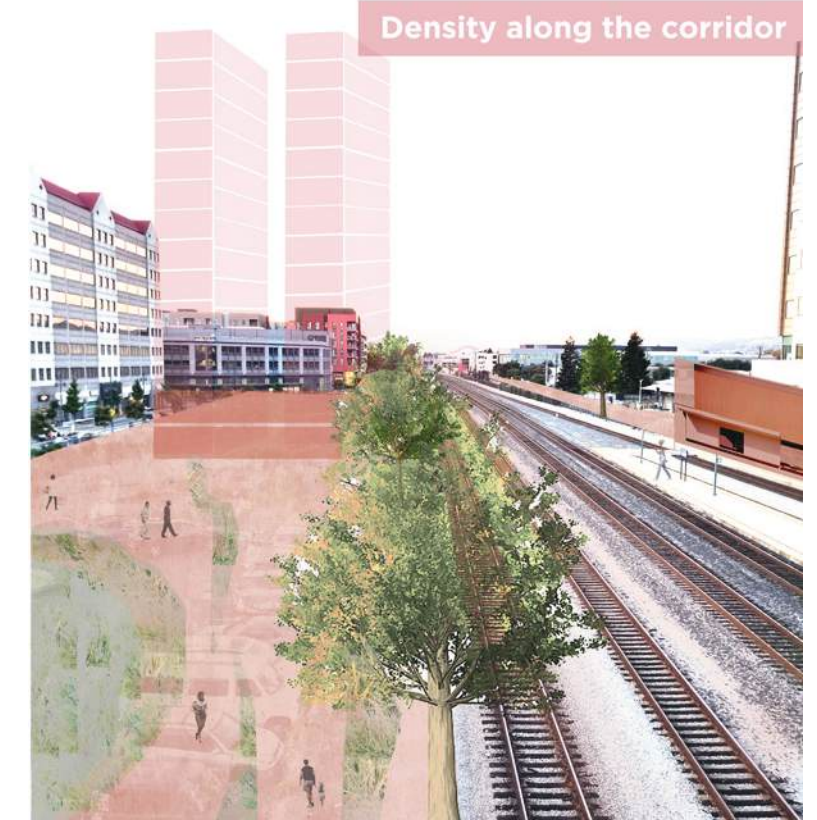
Public space opposite the station



"HOW ABOUT A CLASS AT ORANGE THEORY FOLLOWED  
BY LUNCH AT YOUR FAVORITE FOOD HALL SPOT?"



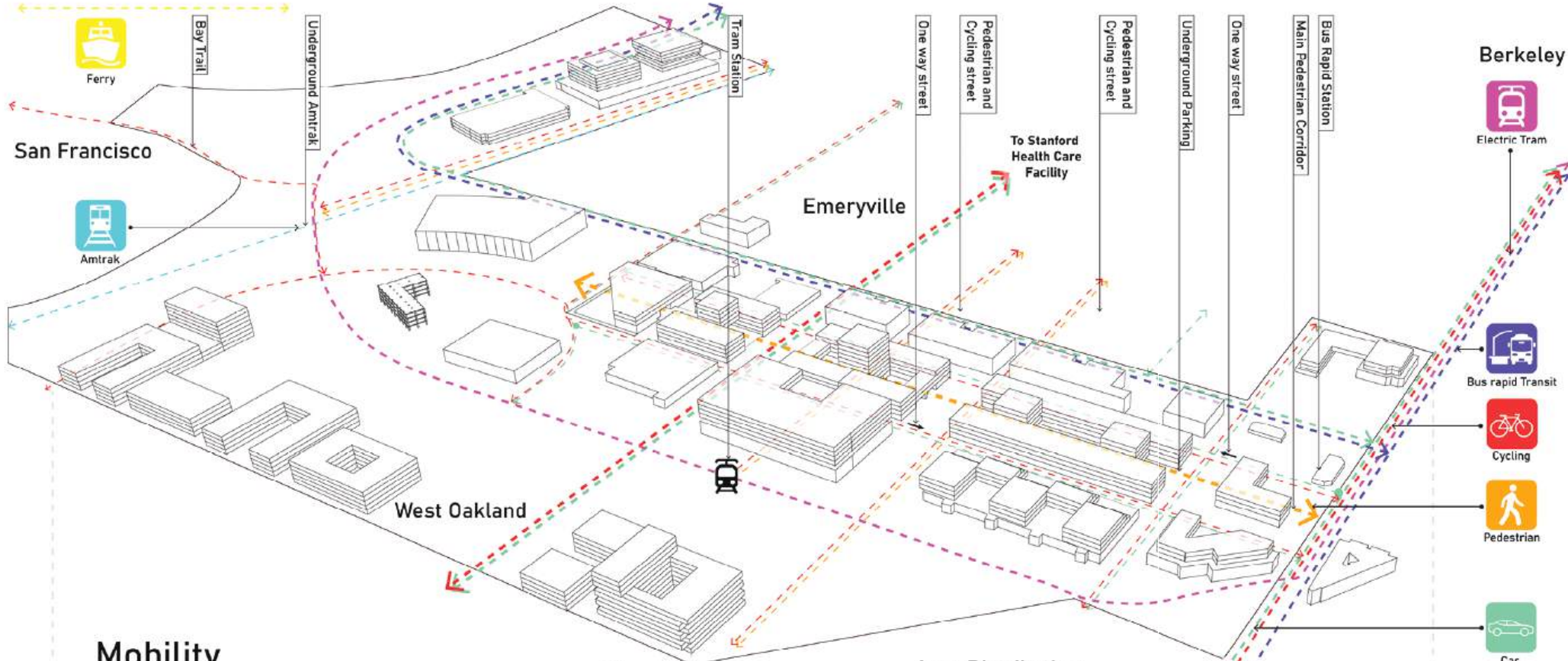
Density along the corridor



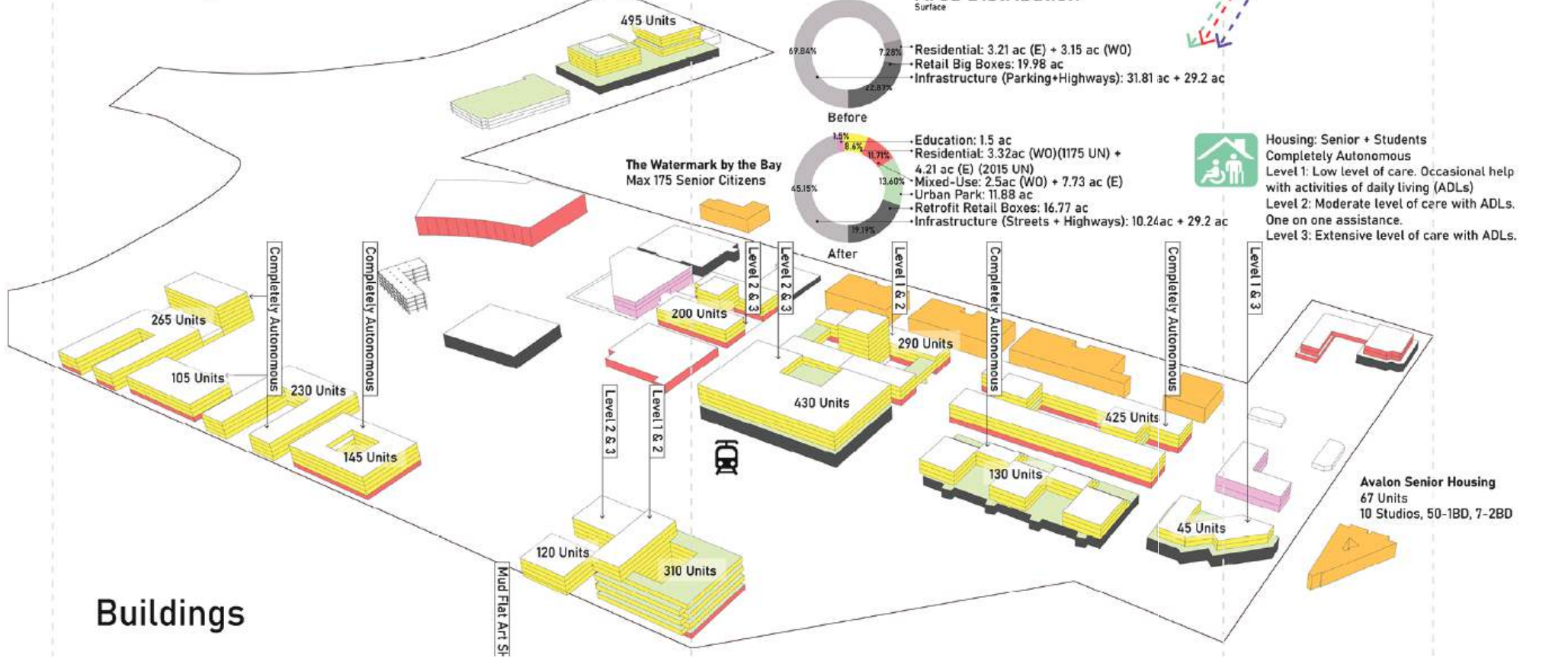


# Aegis Locus

Clarisa Quintanilla



## Mobility



Stable and affordable housing is critical especially for older individuals facing potential relocation challenges: reconfiguration of support networks, new environments, and risk of losing social ties essential for emotional stability. By 2040, the Bay Area expects a 137% increase in residents aged 65 and older. Emeryville experienced a notable 52% rise in this demographic from 2010 to 2019, underscoring the pressing need for inclusive spaces of care. This project aims to create environments that mitigate mobility challenges and daily functioning, address social behavior changes, and cultivate spaces conducive to mental well-being. Through intergenerational engagement, the project seeks to foster spaces of care that support lifelong activity, productivity, and meaningful social connections.





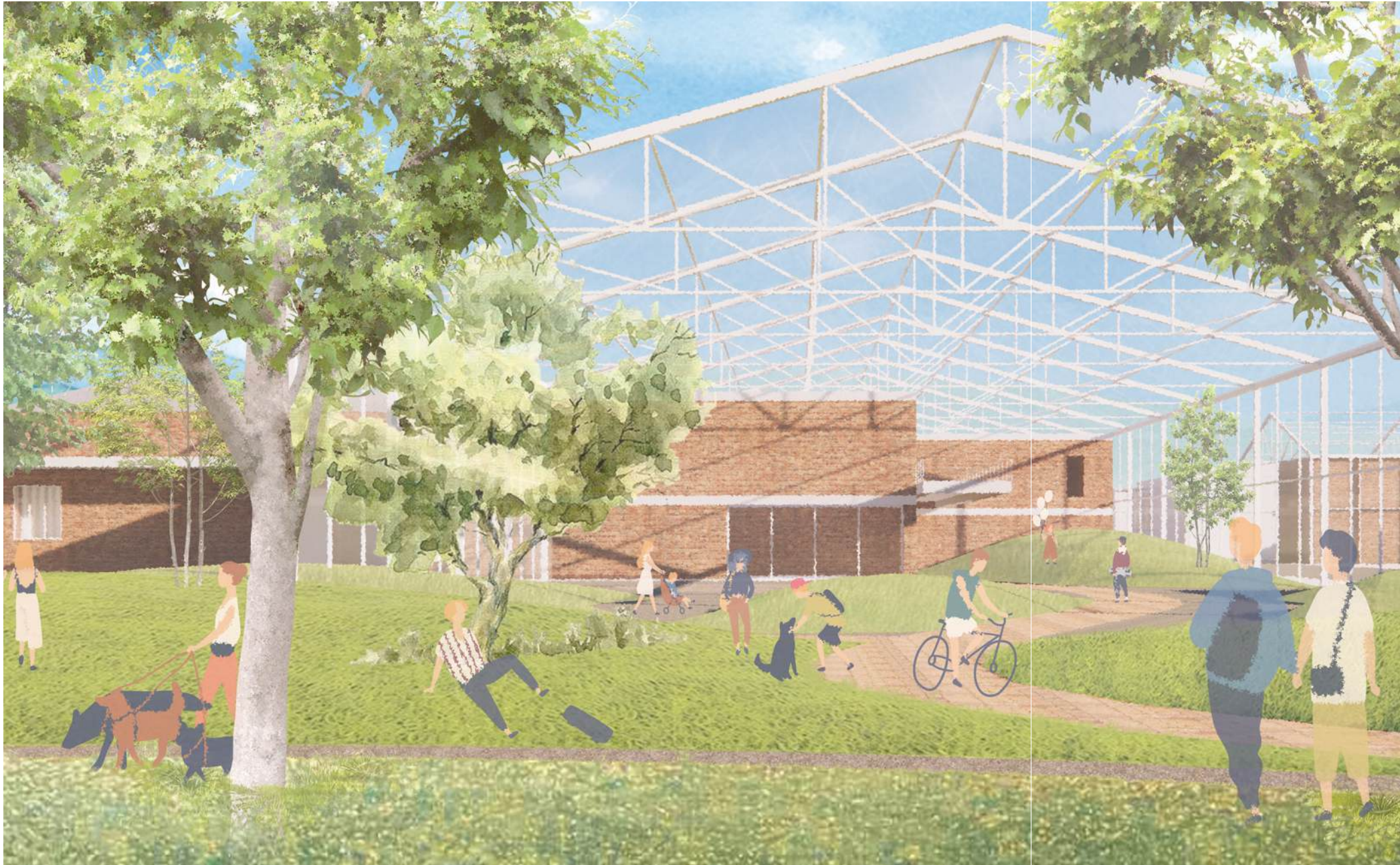


# Reveal The Hidden

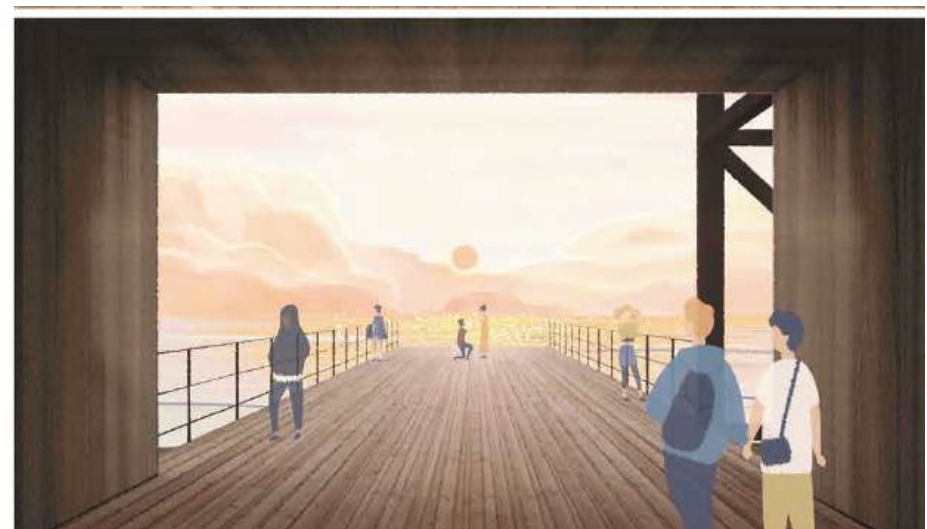
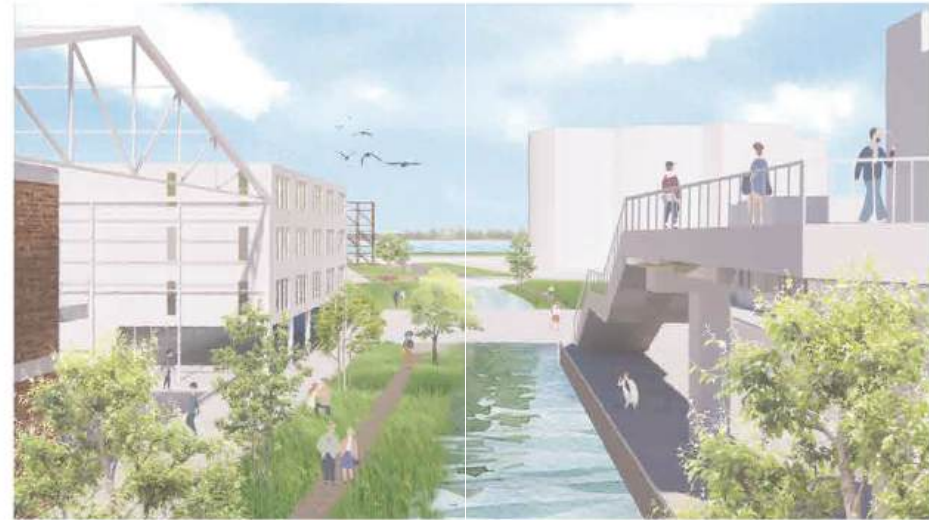
**Xiang Xiong**

As a resident of Emeryville, I used to notice a lot of historical remains such as shellmound, brick buildings, temescal creek and some old art installations, but I never knew the stories behind them. Based on this experience, I define Emeryville's scarcity as having a wealth of historical stories and remains that have not been adequately told.

In order to transform Emeryville from scarcity to abundance, I utilized the earliest historical landscape, the Temescal Creek, to integrate and connect different historical sites from different time periods to form a historical trail from San Pablo Avenue to San Francisco Bay. This historic trail not only leads people to discover the hidden temescal creek, but also brings people to get to know the earlier history of the Emeryville, meanwhile telling the new stories that are happening in the Emeryville now and in the future.

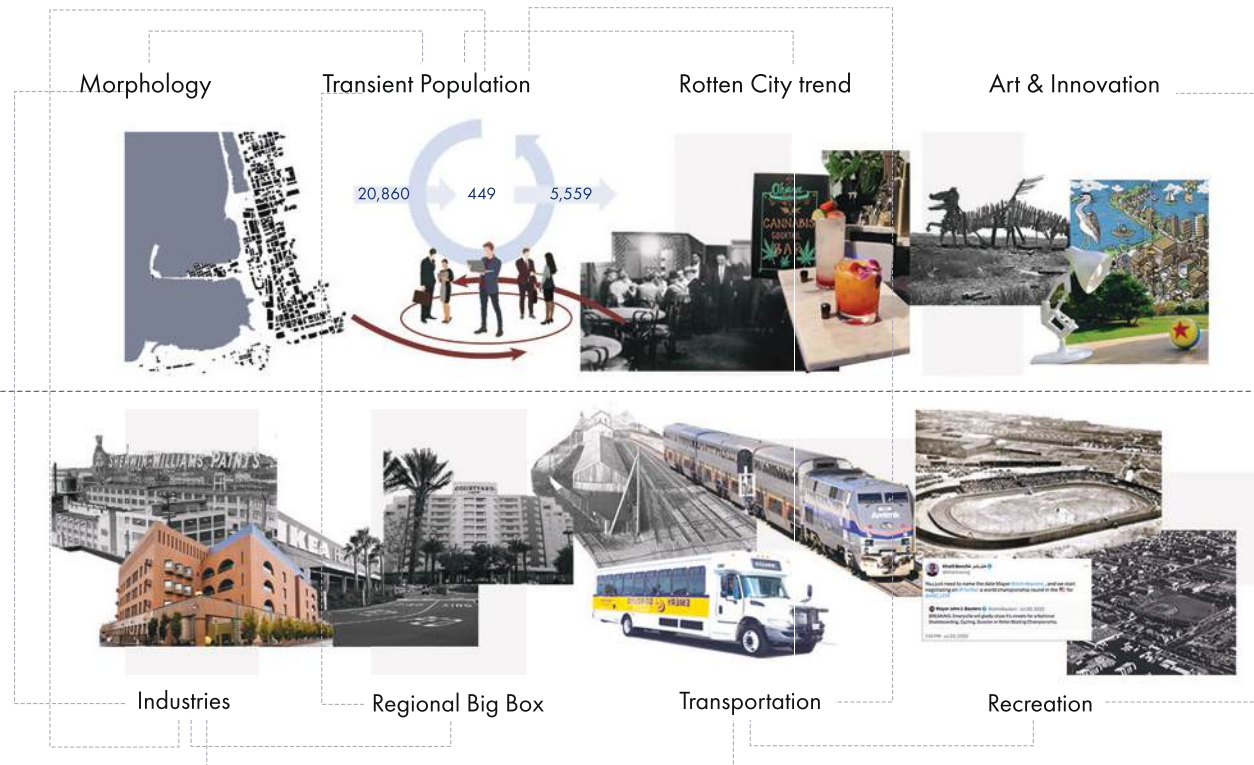
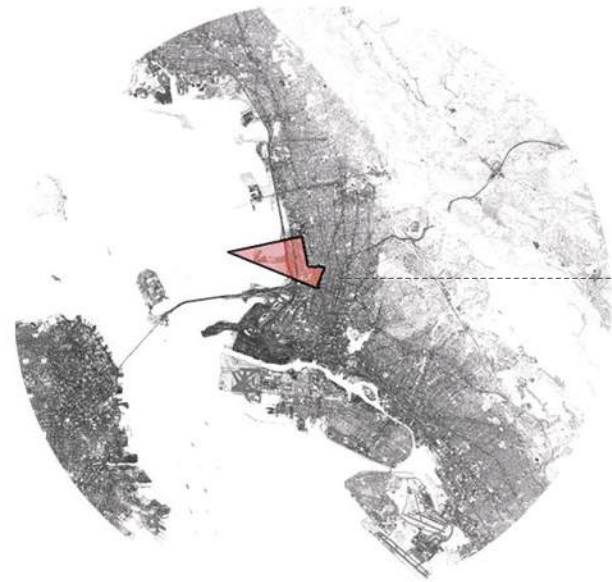








Nestled between San Francisco, Oakland and Berkeley, along the Bay shoreline



# Delirious Emeryville

Bageshri Thakar

As cities grow, there are functions that keep being expelled, creating inner and outer peripheries. The project attempts to rethink how urbanism in this context responds and accommodates these functional necessities and infrastructures within the city fabric. The idea finds its theoretical base in Paolo Vigano and Henri Lefevre's texts on heterotopia.

Emeryville's historical industrial roots and urban decay, coupled with its ethos of embracing growth and change, present an opportunity to envision the city's future for 2050 through a functional and sustainable landmark. This initiative aims to disrupt the conventional blend of functions and stimulate the exploration of atypical, unconventional, and exciting functions, integrating them into the unique fabric of this nontraditional site and city. In doing so, it seeks to forge new connections within the urban landscape while challenging established norms.

## Infrastructure



## Recreation



## Heterotopic Lens

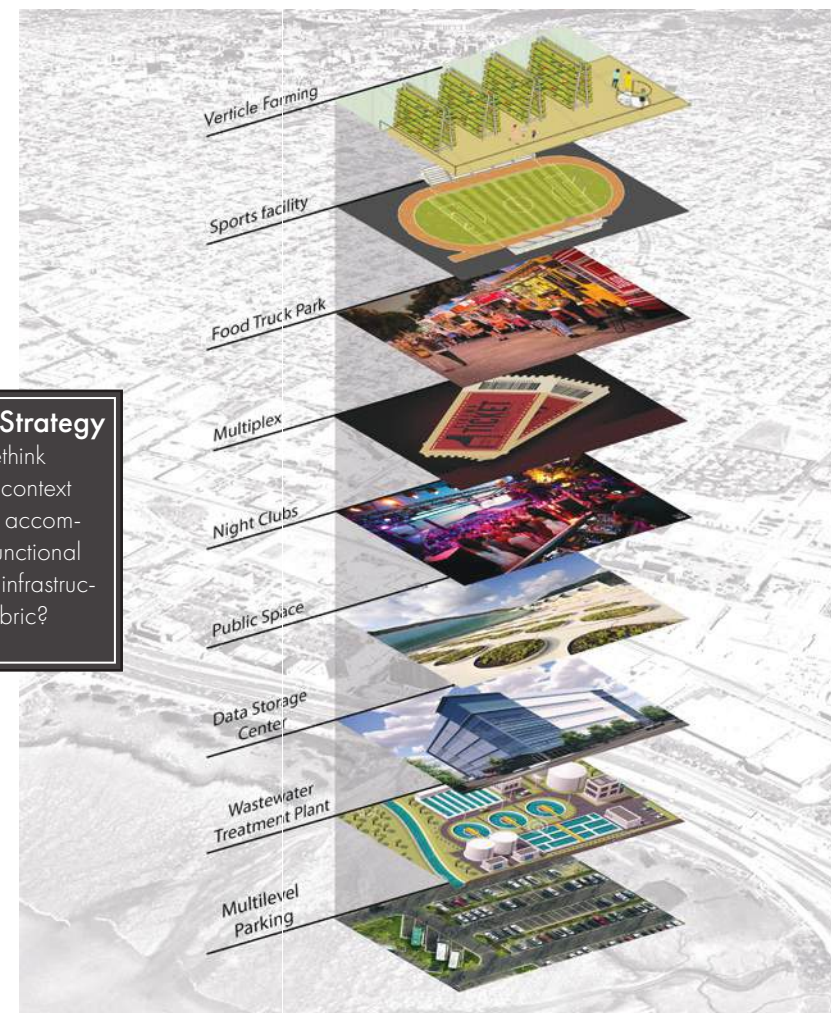
As cities grow, certain necessary but unconventional functions and infrastructure keep being expelled, creating inner and outer peripheries.

## Industries

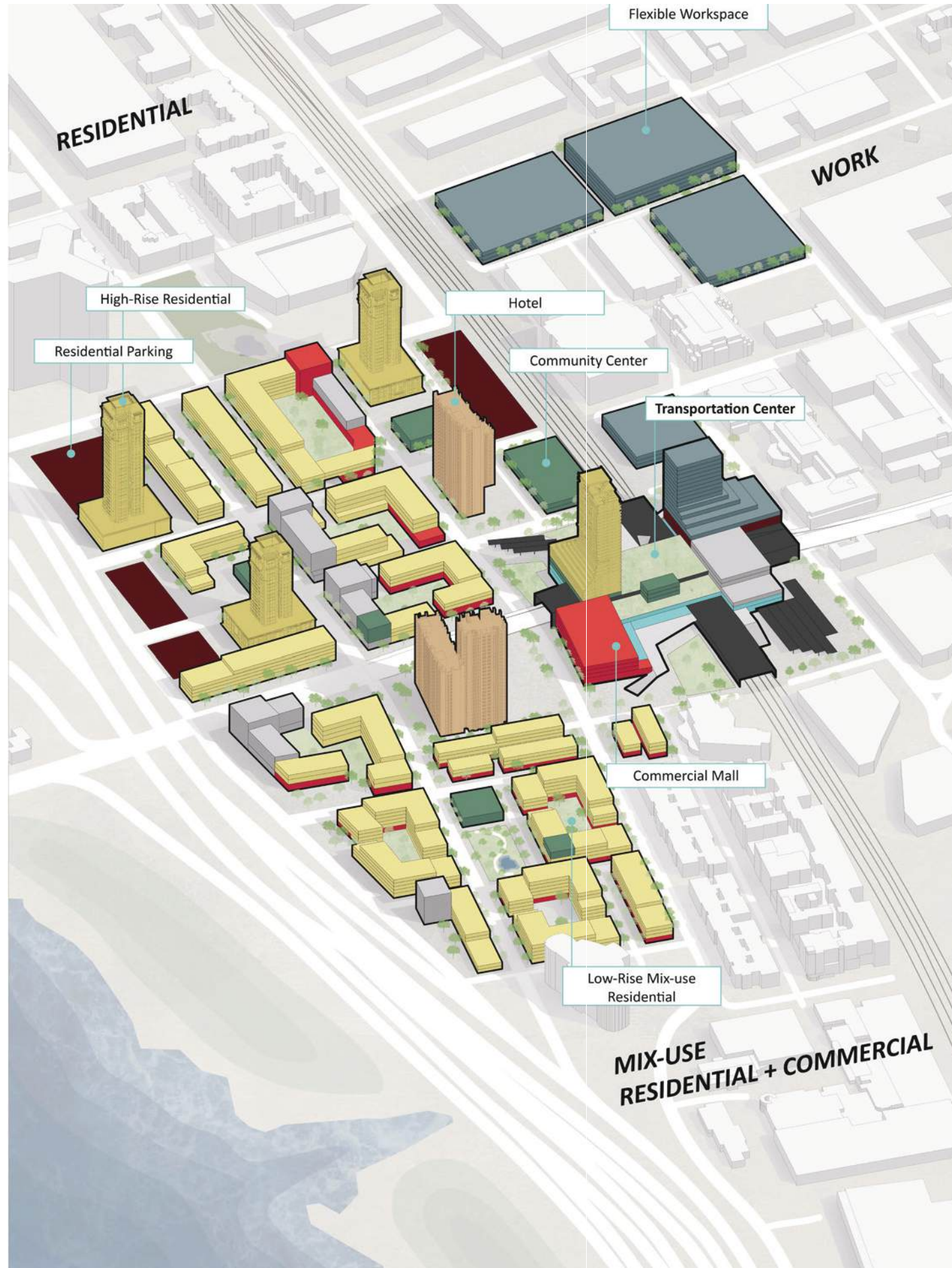
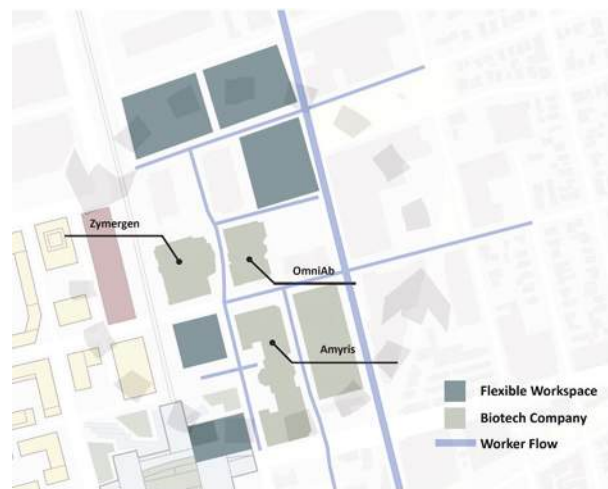


## Conceptual Strategy

How can we rethink urbanism in this context to respond and accommodate these functional necessities and infrastructures into city fabric?







# Resilient Hub

Boge Lyu

Life science occupied a large portion of Emeryville's economy and the city is in rapid development into a biotech hub. This has revealed the city's scarcity on economic resilience. The project aims to transform the least utilized land at the southeast Emeryville to increase the city resilience and fit it into urban grid structure.

The project consists of four major parts: high-speed railway, flexible workspace, resilient community, and affordable housing. The intersection of railway and elevated road has been reshaped by one transit hub as the connector of the whole region.



# Amphibio City

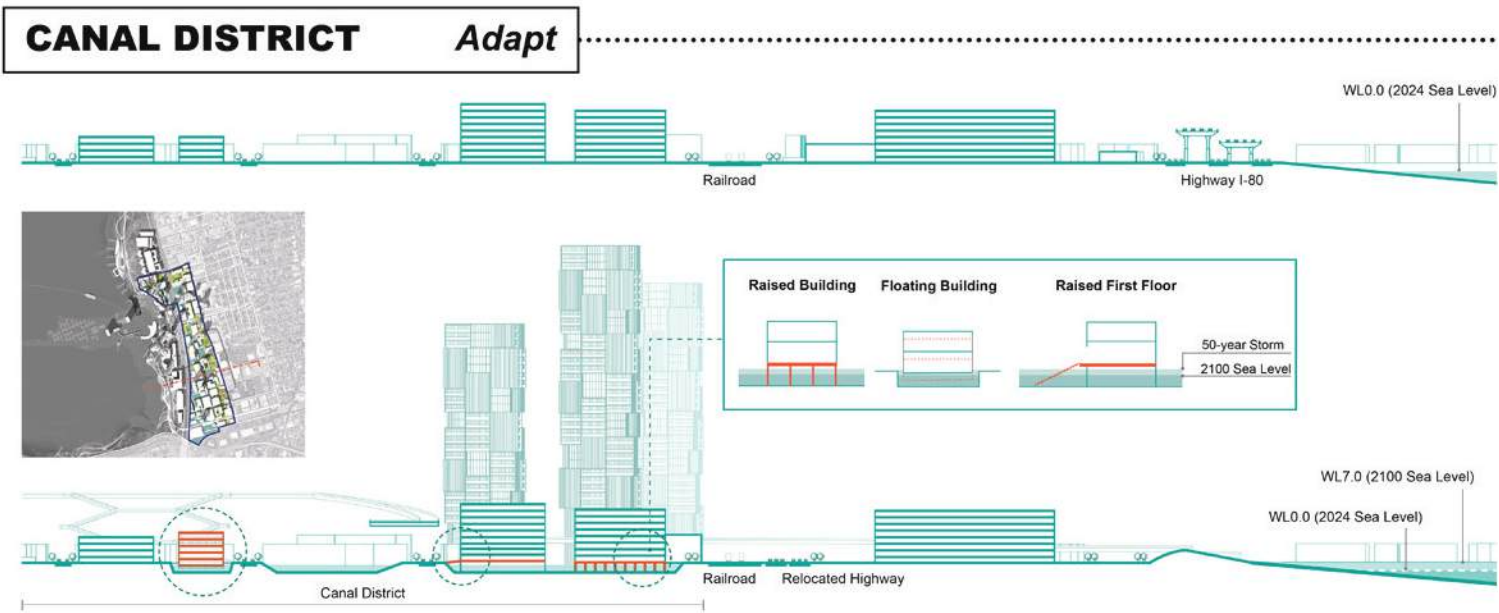
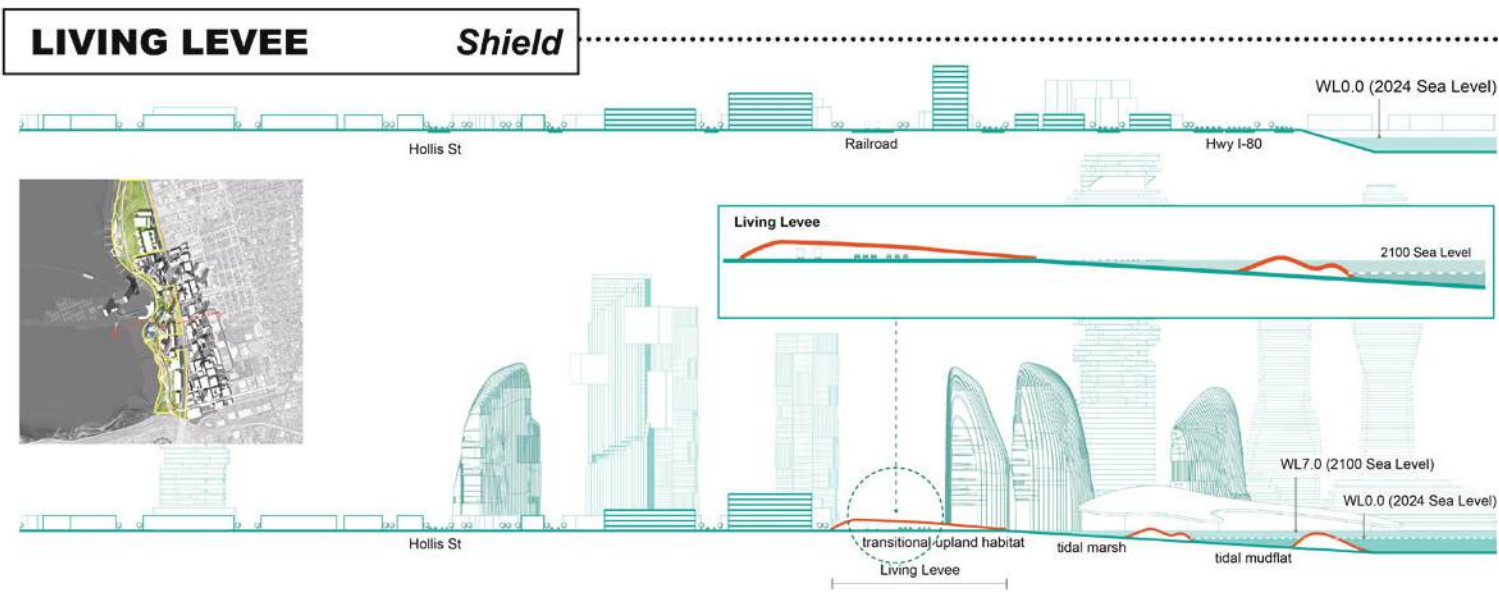
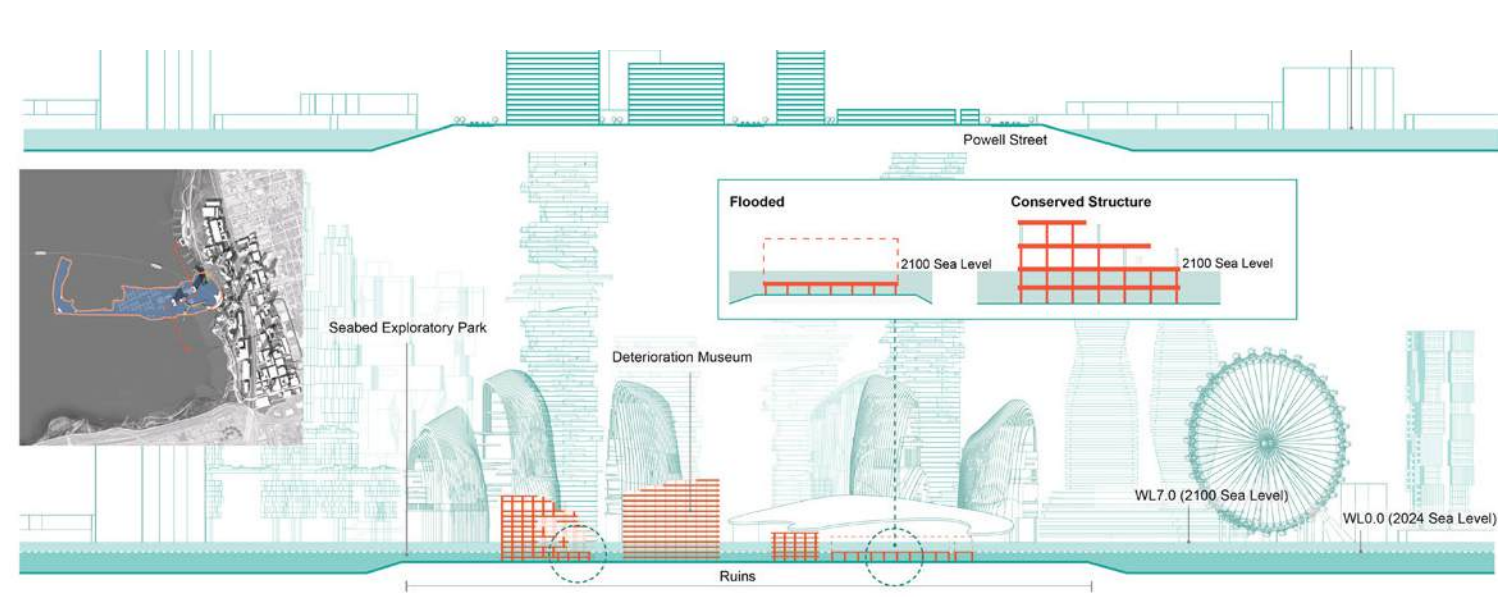
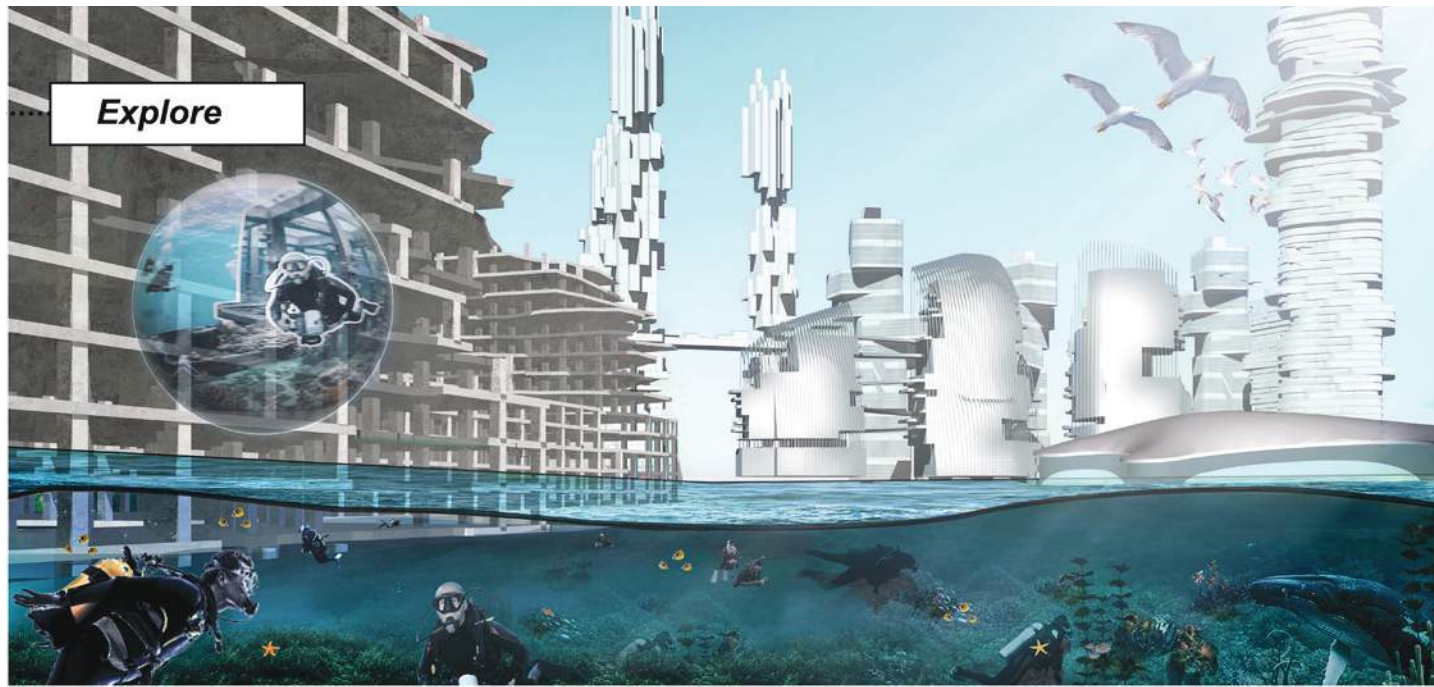
## Maxi



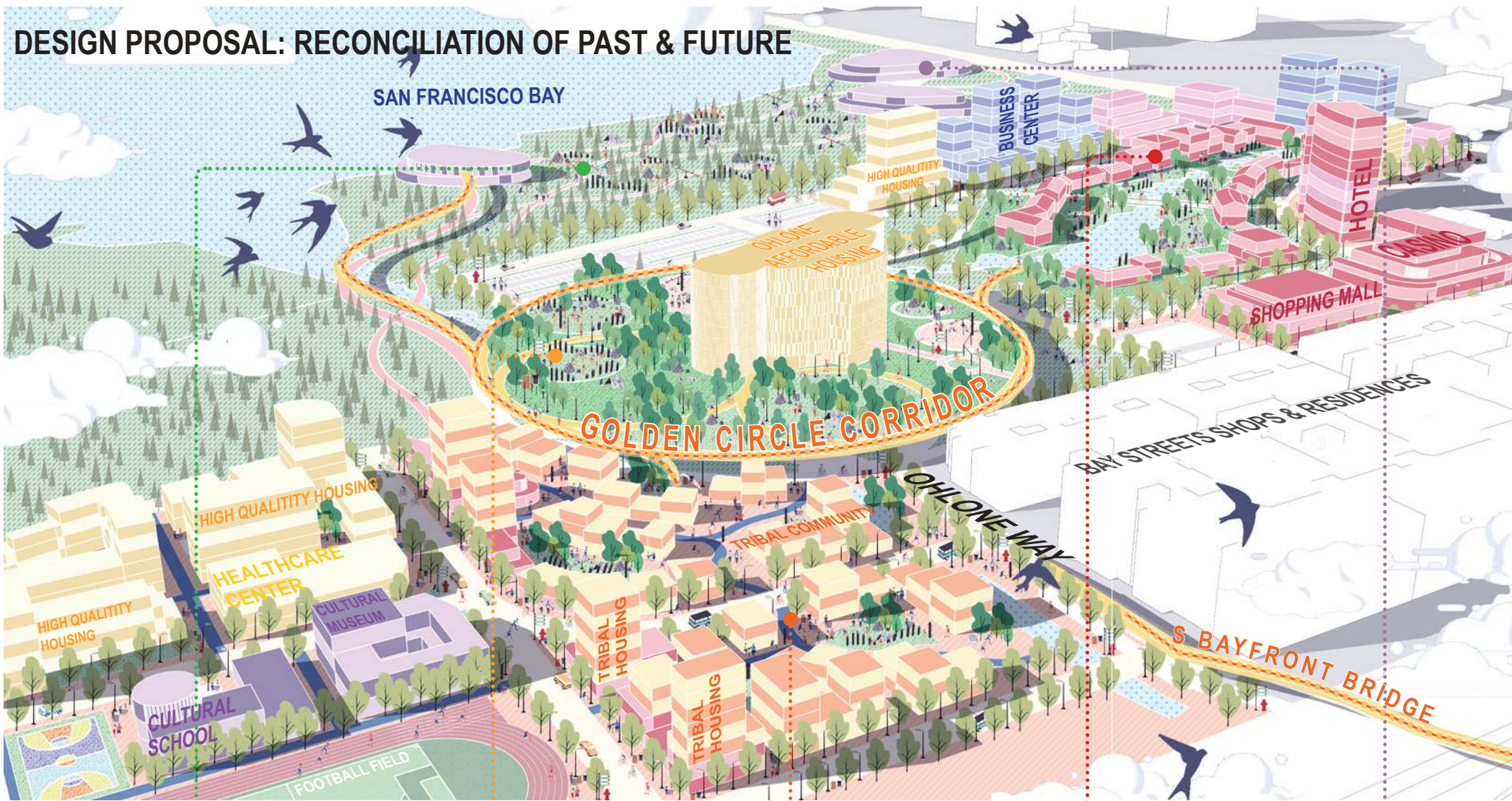
For Emeryville, a small city facing major environmental issues such as sea level rise, it is critical to develop the synergies of urban design to leverage future infrastructure investments to address multiple issues simultaneously. Fueled by a burgeoning housing demand, the Emeryville peninsula underwent extensive landfill operations.

Characterized by a frenetic pace of construction and development, the landfill not only altered the physical geography of the shoreline but symbolized the region's rapid urbanization from the industrial past towards residential and commercial expansion. The entire city will be reconfigured as it shifts from a scarcity of permeability to an abundance of resilience - a new way of inhabitation.









# A Basket of Dreams

Ticky Shi

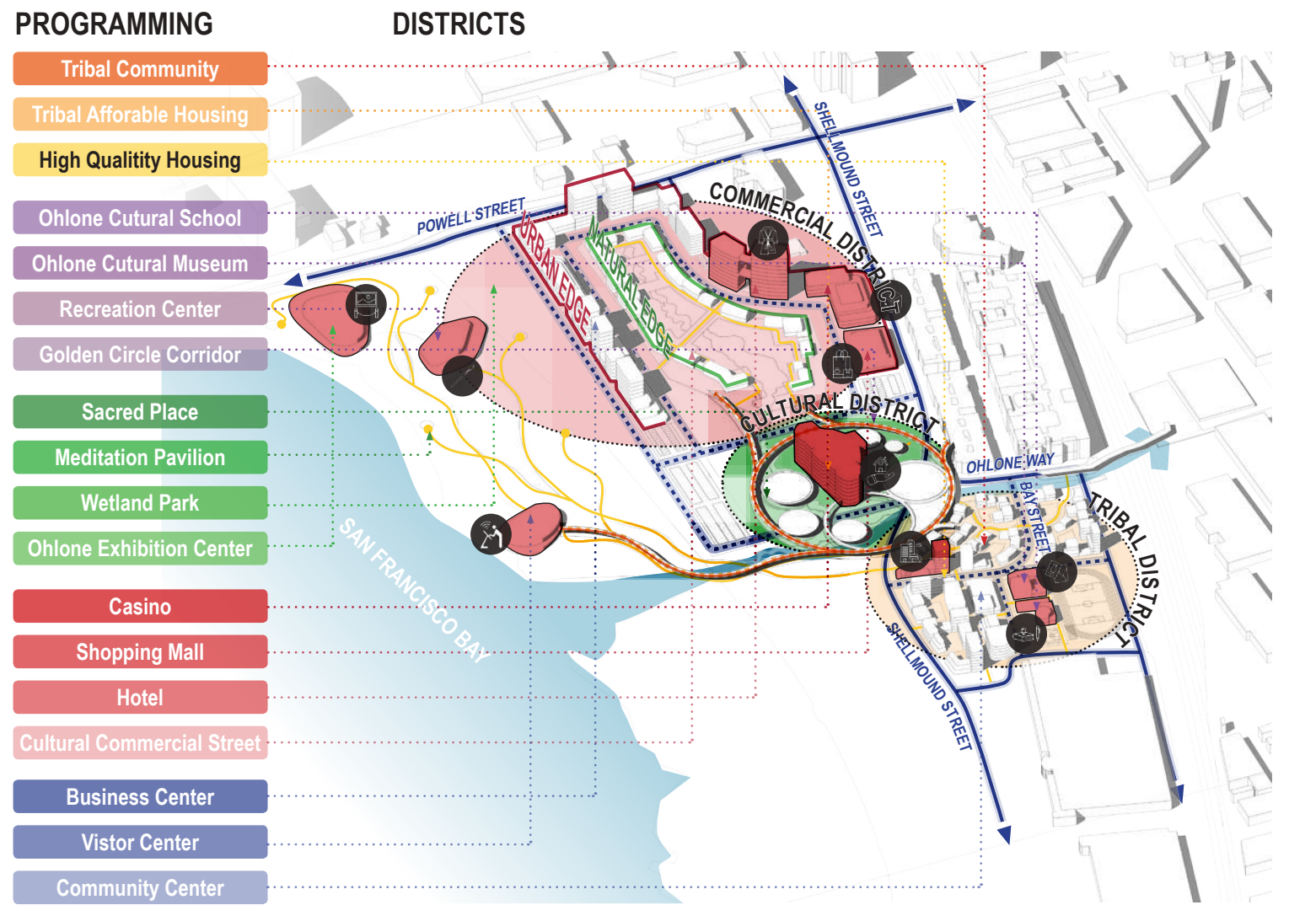
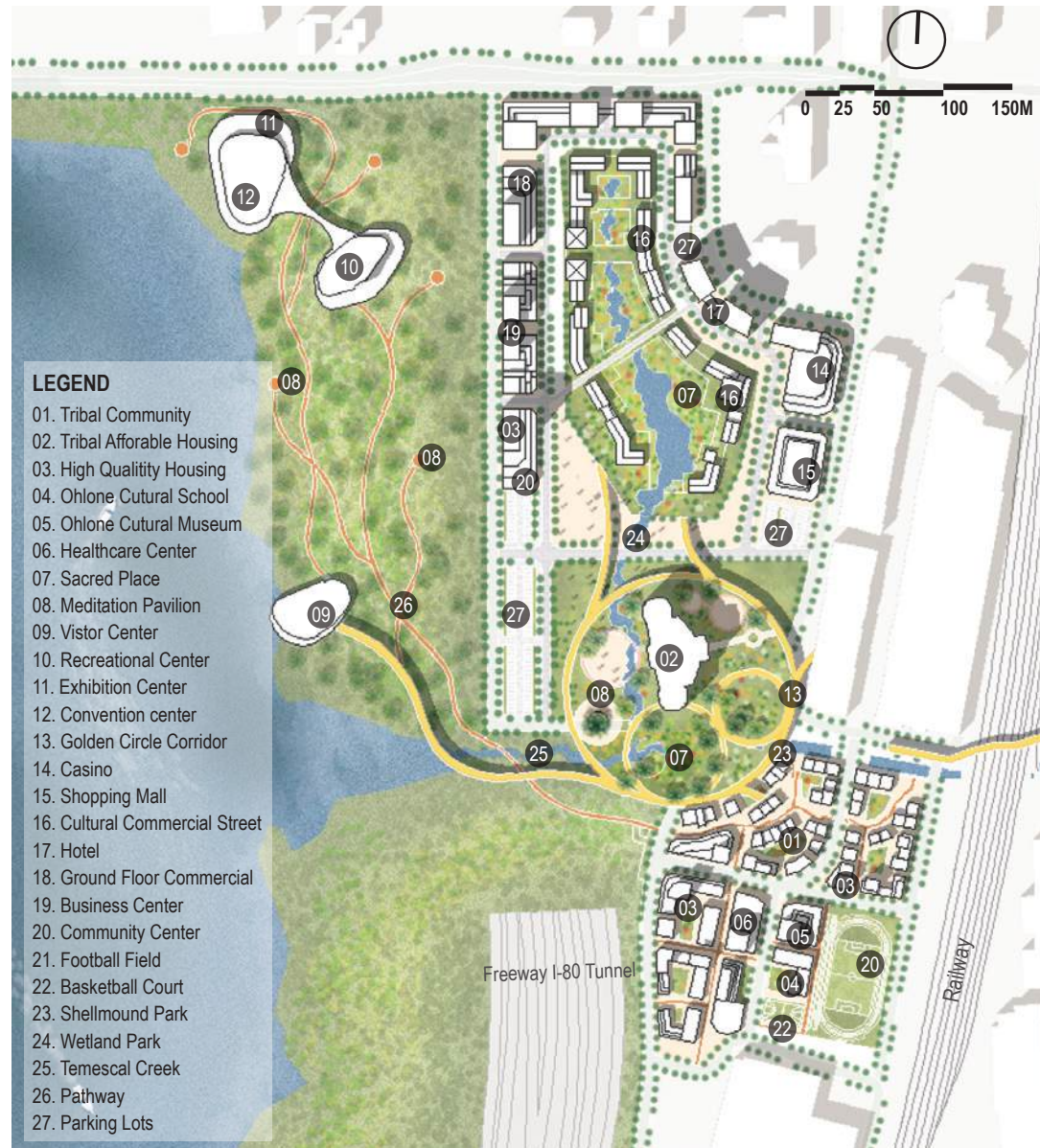
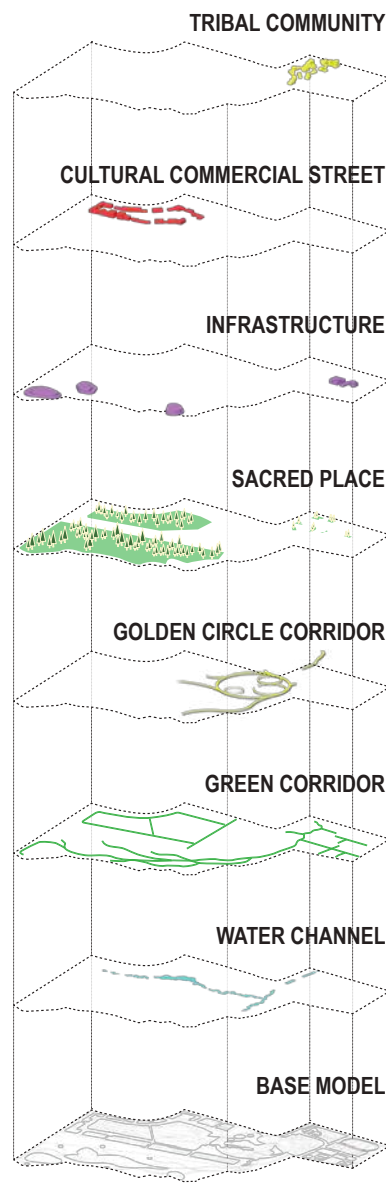
If we compare a city to a piece of music, then the prelude sets a neat tone;  
 If we compare a city to a novel, then the prologue opens the theme of the story;  
 If we compare a city to a dinner party, then the appetizers are responsible for arousing the interest of the diners.

Then □ What is the prelude of Emeryville?  
 What is the original theme of Emeryville?  
 What is the appetizer that attracts visitors to taste Emeryville?

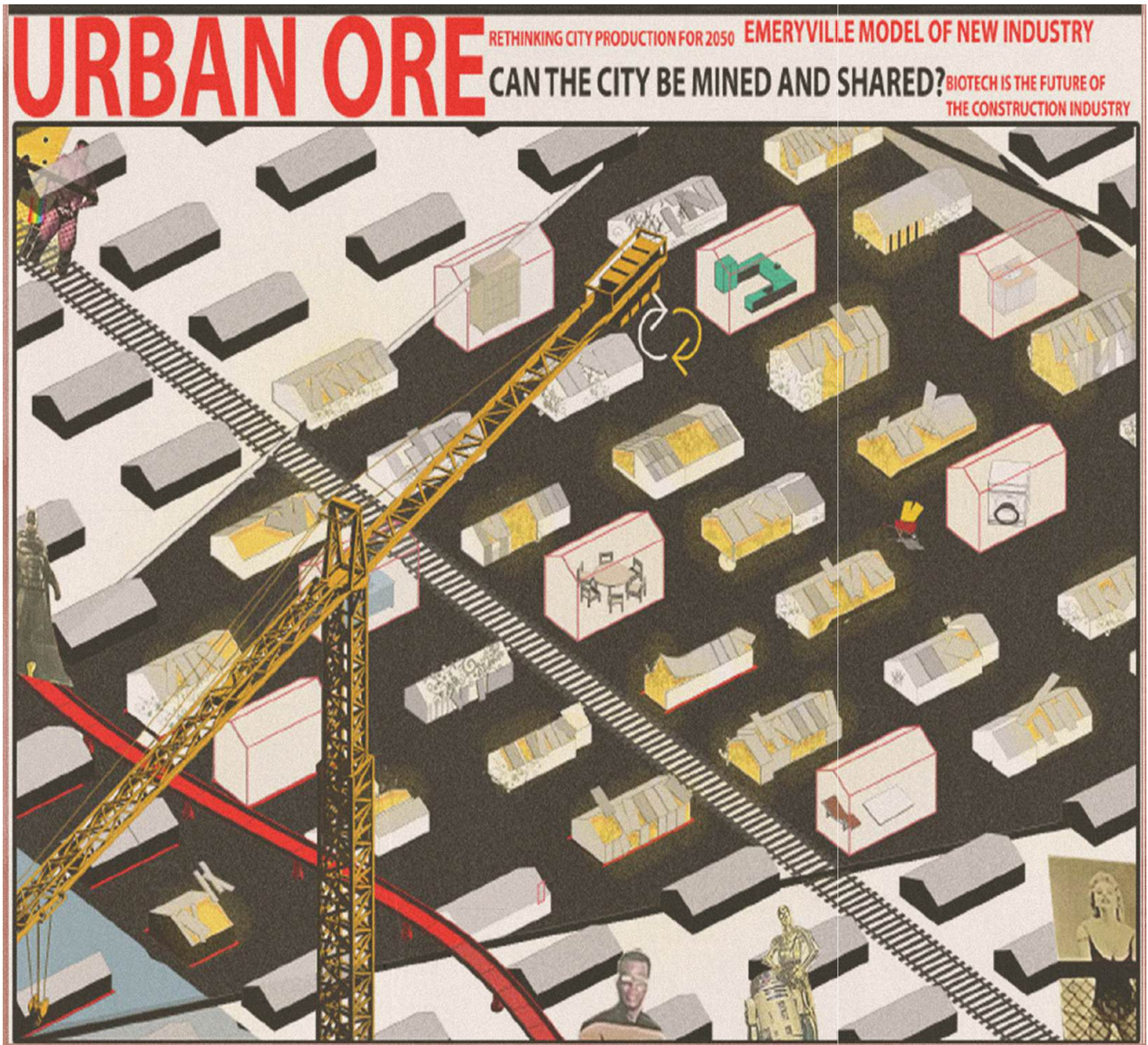
This design project envisions a cityscape that embraces Ohlone's cultural renaissance and fosters reconciliation. Grounded in principles of respect and collaboration, this endeavor seeks to weave the rich tapestry of Ohlone's heritage into the fabric of our urban environment. Our mission is to create spaces that honor the traditions, stories, and practices of the Ohlone communities that have long guarded this land, helping preserve and celebrate the heritage and allowing residents to understand their city's evolution over time.











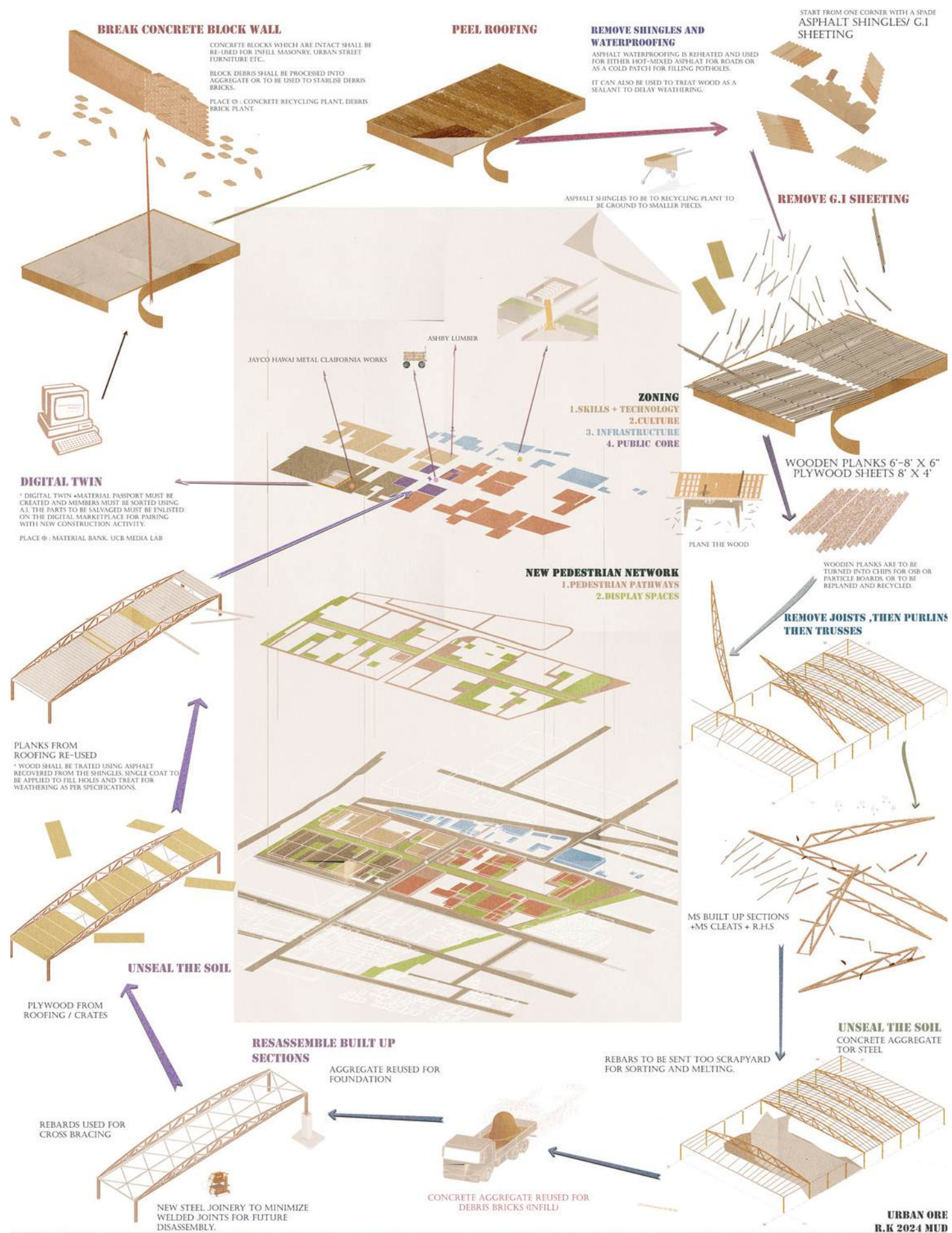
# Urban Ore

Raghuveer Kathpalia

In recent times it has become only more apparent how precarious the global supply chain is. With climate change, it has become imminent to rethink the global supply chain, in essence how we make and unmake our cities. The project takes its inspiration from the 'Urban ore eco-park' and reads the city as a site of deposition of material over time, as a literal ore. Emeryville was once an 'industrial hub', a place where things that 'make up' our cities were made.

Post deindustrialization the city has had to transition, something that is still ongoing. The project reimagines this transitioning post-industrial landscape as a construction campus, as a place where new skills, technologies and infrastructures that challenge conventions of city making can be developed and demonstrated. The campus is to serve as a new kind of interface between the city and industry, with a new kind of public realm that enables new cultures of making and unmaking cities.

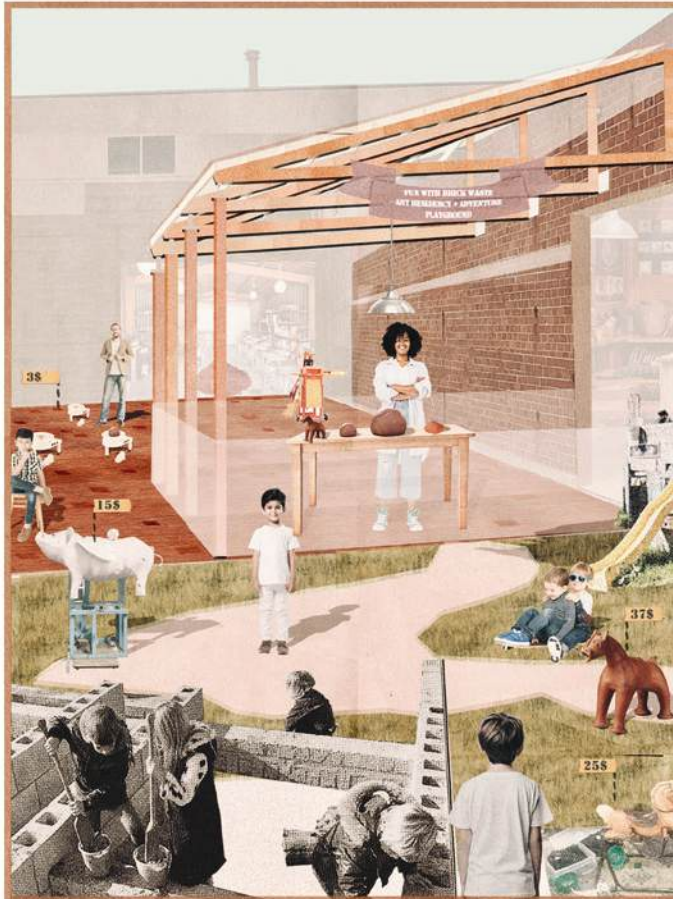




**BIOTECH**  
A BIOTECH COMPANY ATTEMPTS TO GROW A SPECIES OF BAMBOO THAT WHEN USED AS A BUILDING MATERIAL WEATHERS SLOWER. A NEW PUBLIC REALM EMERGES ON THE SHELTERED LAND, WHERE THE PEOPLE OF THE CITY AND OTHER VISITORS CAN WITNESS THE FUTURE OF CONSTRUCTION UNFOLD.



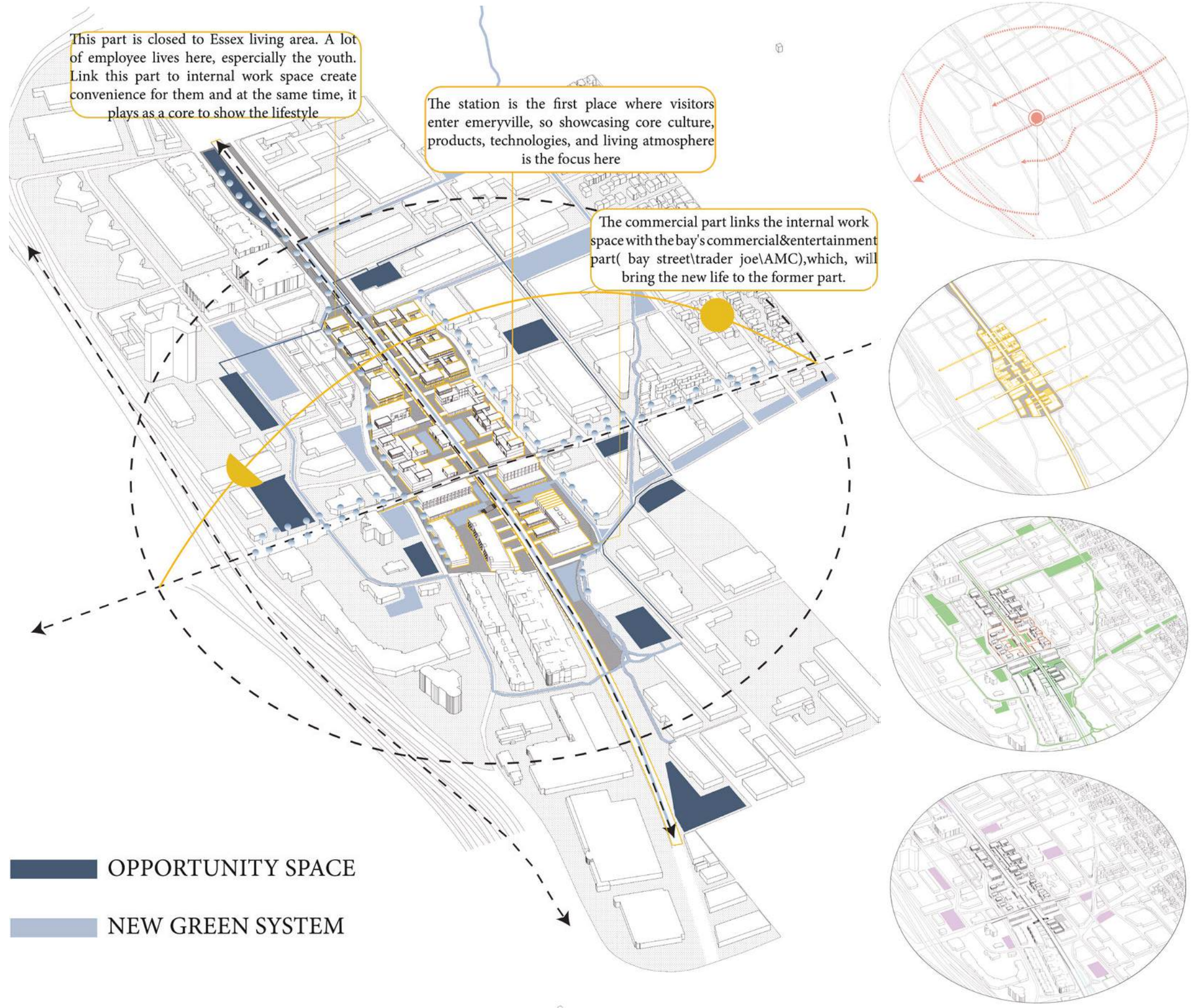
**CO-LIVING**  
A CO-LIVING EXPERIENCE THAT HELPS ONE ACQUIRE AN UNDERSTANDING OF WHAT IT MEANS TO LIVE SUSTAINABLY THROUGH RADICAL SHARING AND INTEGRAL DWELLING.





# New Destination

Xeuyi Xhao

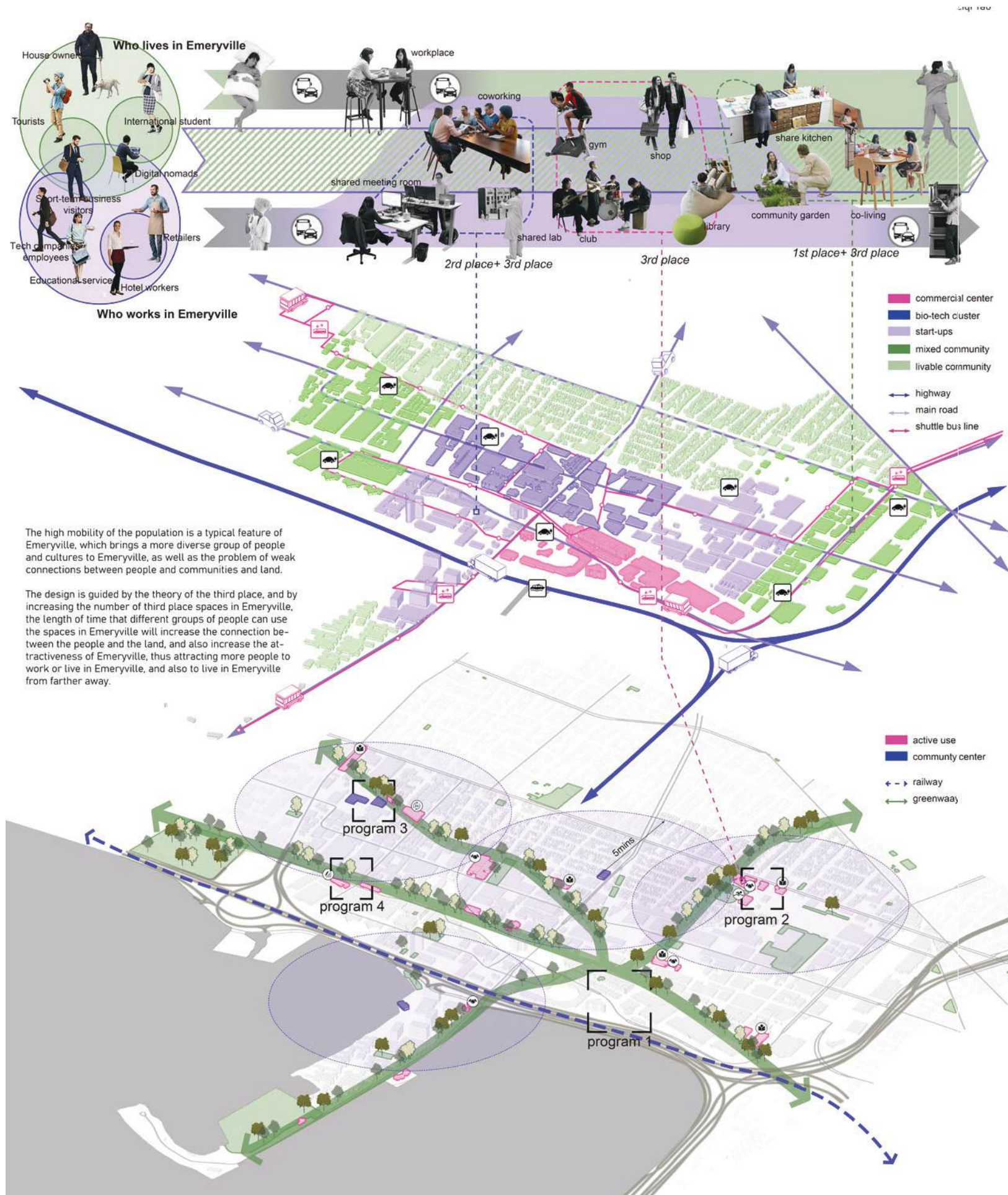


The rail track in Emeryville plays a dual role, dividing the city while facilitating transportation managed by Amtrak. Emeryville station is crucial for passengers traveling to San Francisco on scenic routes like California Zephyr and Capitol Corridor. However, for Emeryville to become a destination itself, it must develop a more attractive personality. By investing in unique attractions, enhancing urban design, and promoting local culture, Emeryville can transform from a mere transit point to a sought-after destination. City officials should focus on creating a compelling identity that encourages visitors to explore and spend time in Emeryville.



# Temparyville Everlast- ingville

Ziqi Tao



The high mobility of the population is a typical feature of Emeryville, which brings a more diverse group of people and cultures to Emeryville, as well as the problem of weak connections between people and communities and land.

The design is guided by the theory of the third place, and by increasing the number of third place spaces in Emeryville, the length of time that different groups of people can use the spaces in Emeryville will increase the connection between the people and the land, and also increase the attractiveness of Emeryville, thus attracting more people to work or live in Emeryville, and also to live in Emeryville from farther away.

The high mobility of the population is a typical feature of Emeryville, which brings a more diverse group of people and cultures to Emeryville, as well as the problem of weak connections between people and communities and land. The design is guided by the theory of the third place, and by increasing the number of third place spaces in Emeryville, the length of time that different groups of people can use the spaces in Emeryville will increase the connection between the people and the land, and also increase the attractiveness of Emeryville, thus attracting more people to work or live in Emeryville, and also to live in Emeryville from farther away.









**final  
review**



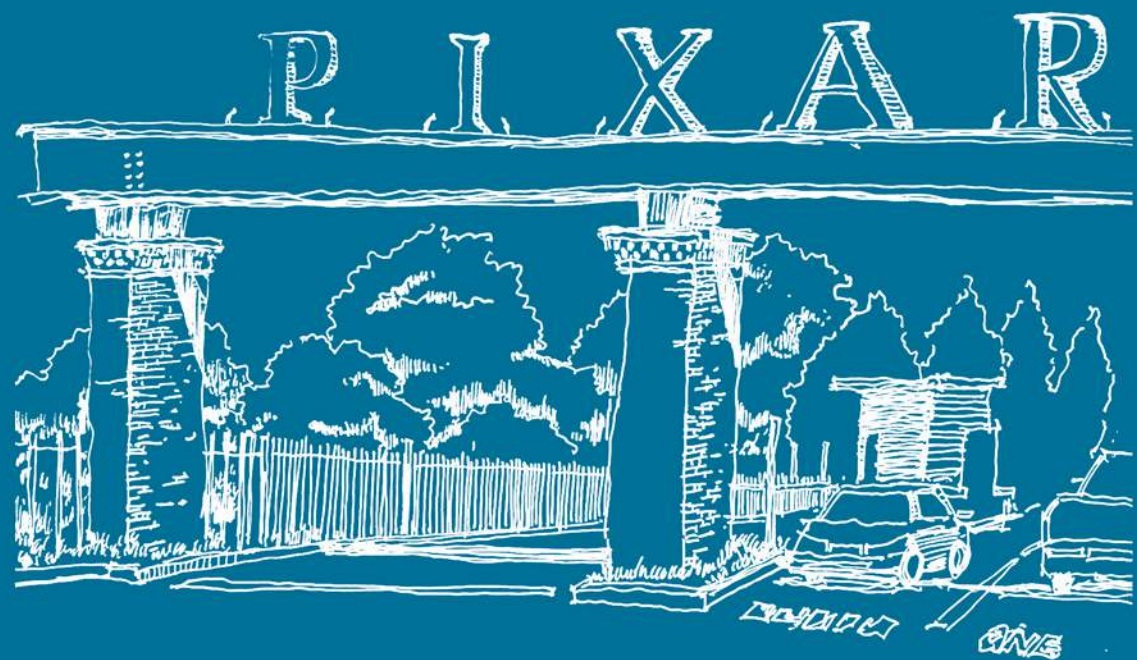
# closing remarks

Through an enriching exchange of ideas and dialogues between students and professionals, the studio pushed the boundaries of creative thinking, by proposing radical design responses that will serve as a catalyst to redefine the future of Emeryville in 2050. By venturing beyond their comfort zones, the MUD Cohort of 2024 explored uncharted realms of creativity, redefining limitations and transforming scarcity into abundance to envision resilient, inclusive cities of the future.

The review panel, comprising industry luminaries and visionary thinkers, brought a wealth of expertise and diverse perspectives to the table. They engaged in thought-provoking discussions and provided invaluable insights, challenging the students to push their ideas further and opened new avenues for exploration.







**public  
engagement**



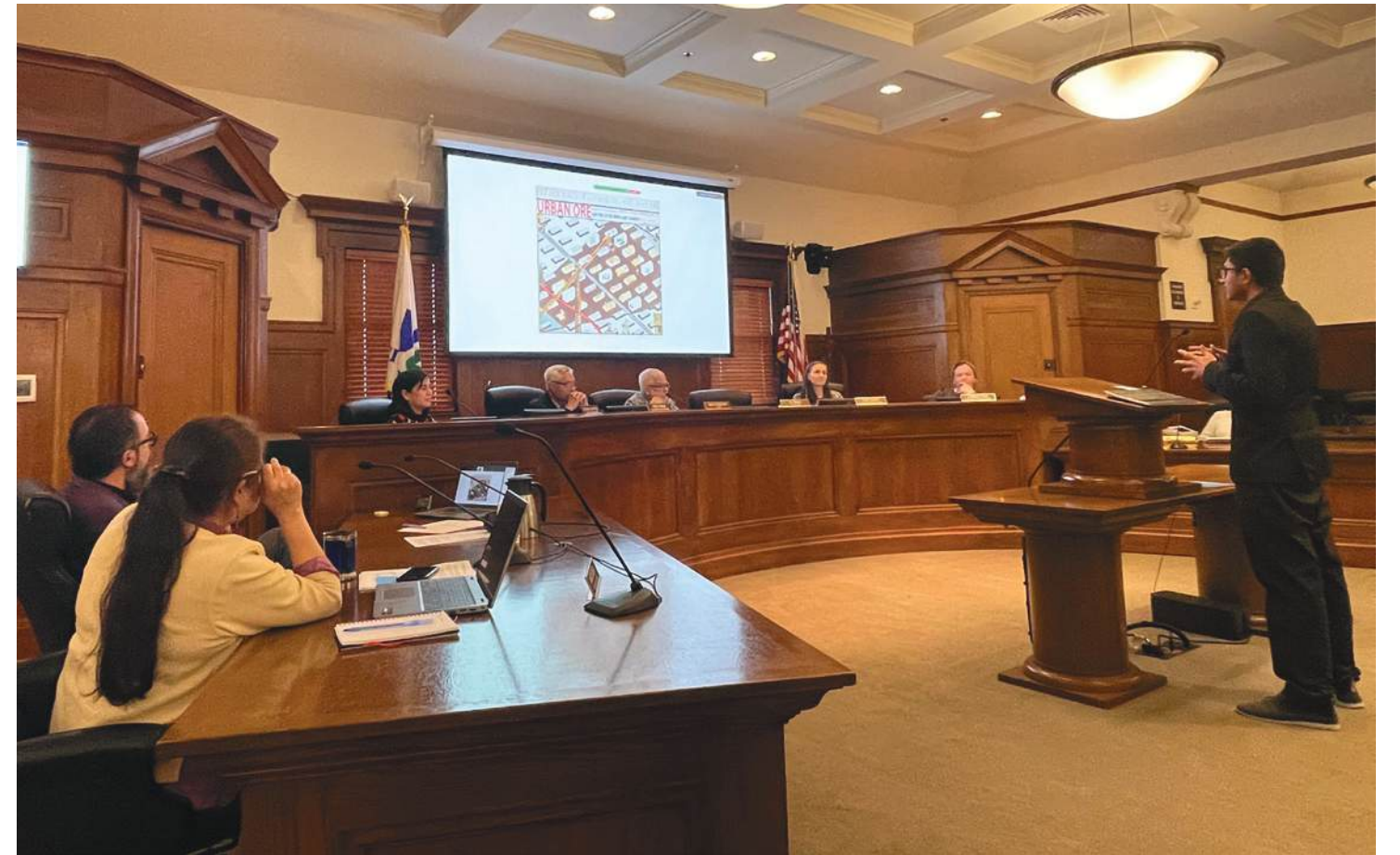
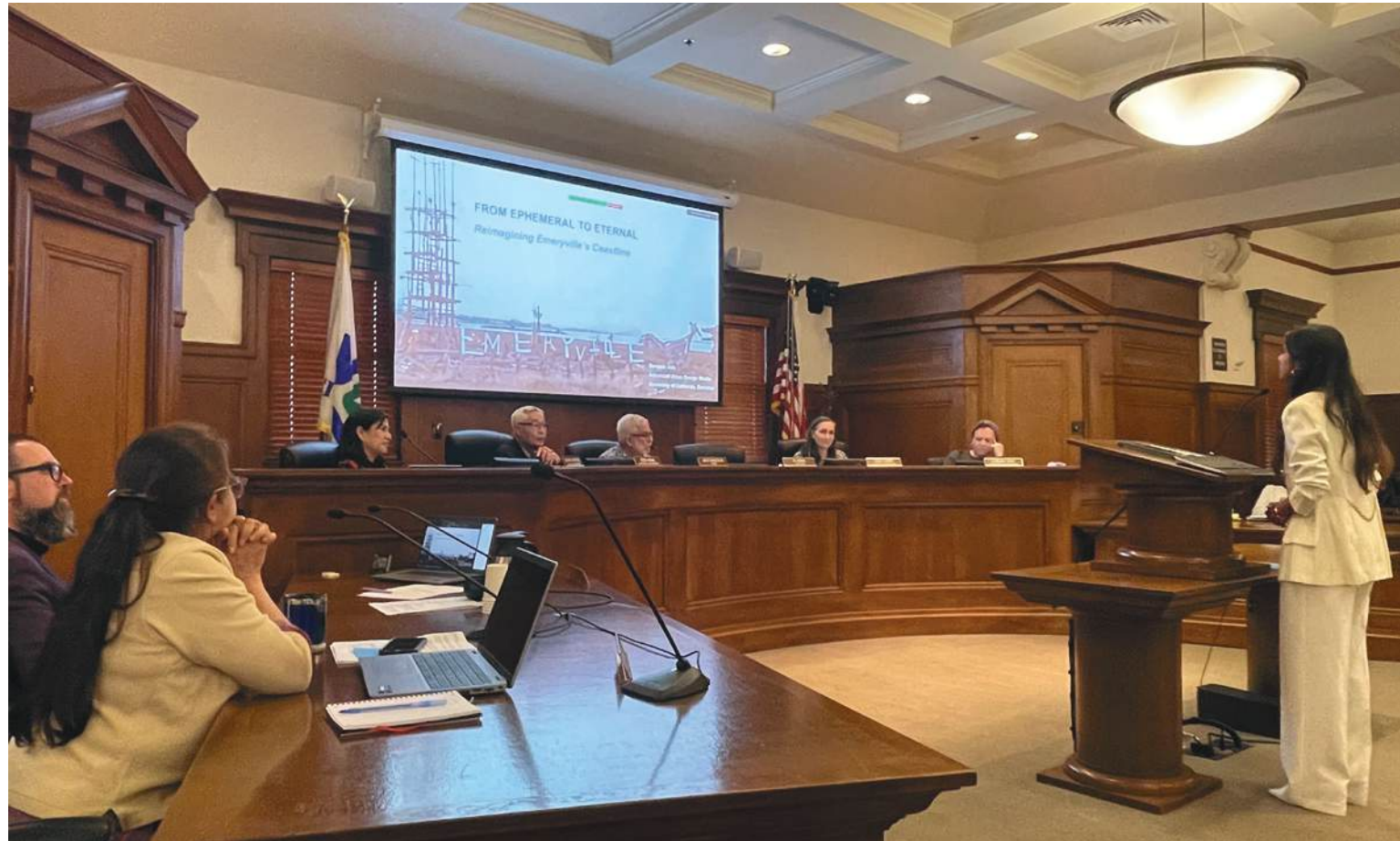
# planning commission presentation & exhibition

The Advanced Design Urban Studio had the privilege of presenting their groundbreaking urban design projects, aimed at shaping the future of Emeryville to the Planning Commission. The presentation began with an overview of the studio by Amit, Mona and Pol followed by the student projects. The studio's proposals were met with resounding praise from the city planners and commissioners, underscoring the significant impact of their proposals. The studio extends its gratitude to Miroo Desai for providing an invaluable platform to showcase their projects to the city with the aim to reimagine Emeryville in 2050.

The studio's projects approached the challenges facing cities from various angles, addressing pressing issues such as climate change, post-industrial landscapes, equitable job distribution, community well-being, and inclusive urban development. Emeryville's compact size and dynamism make it the perfect canvas for pioneering and innovative ideas. The positive reception from the Planning Commission serves as a testament to the studio's vision and dedication to collaborating with the city and its stakeholders to bring their vision of Emeryville 2050 to life.









# instructors



**Amit Price Patel**  
*Partner, DIALOG*



**Mona Lovgreen**  
*Partner, DIALOG*



**Pol Fité Matamoros**  
*University of California, Berkeley*

# students



Clarisa Quintanilla



Nupur Khanter



Bageshri Thakar



Devyani Jain



Xueyi Zhao



Tianqi Shi



Raghuveer Kathpalia



Xiang Xiong



Boge Lyu



Ziqi Tao



Buck Lee



Maxi







**“With its nimbleness and dynamism,  
Emeryville’s compact landscape is the  
ideal playground for urban innovation”**